

06	05	04	03	02	01
07	08	09	10	11	12
18	17	16	15	14	13
19	20	21	22	23	24
30	29	28	27	26	25
31	32	33	34	35	36



HUMBOLDT COUNTY

WITHIN SECTION 24, T.36N. R.39E. M.D.B.&M.

NOTE: This plat is for assessment purposes only and does not represent a survey of the lands on this plat.

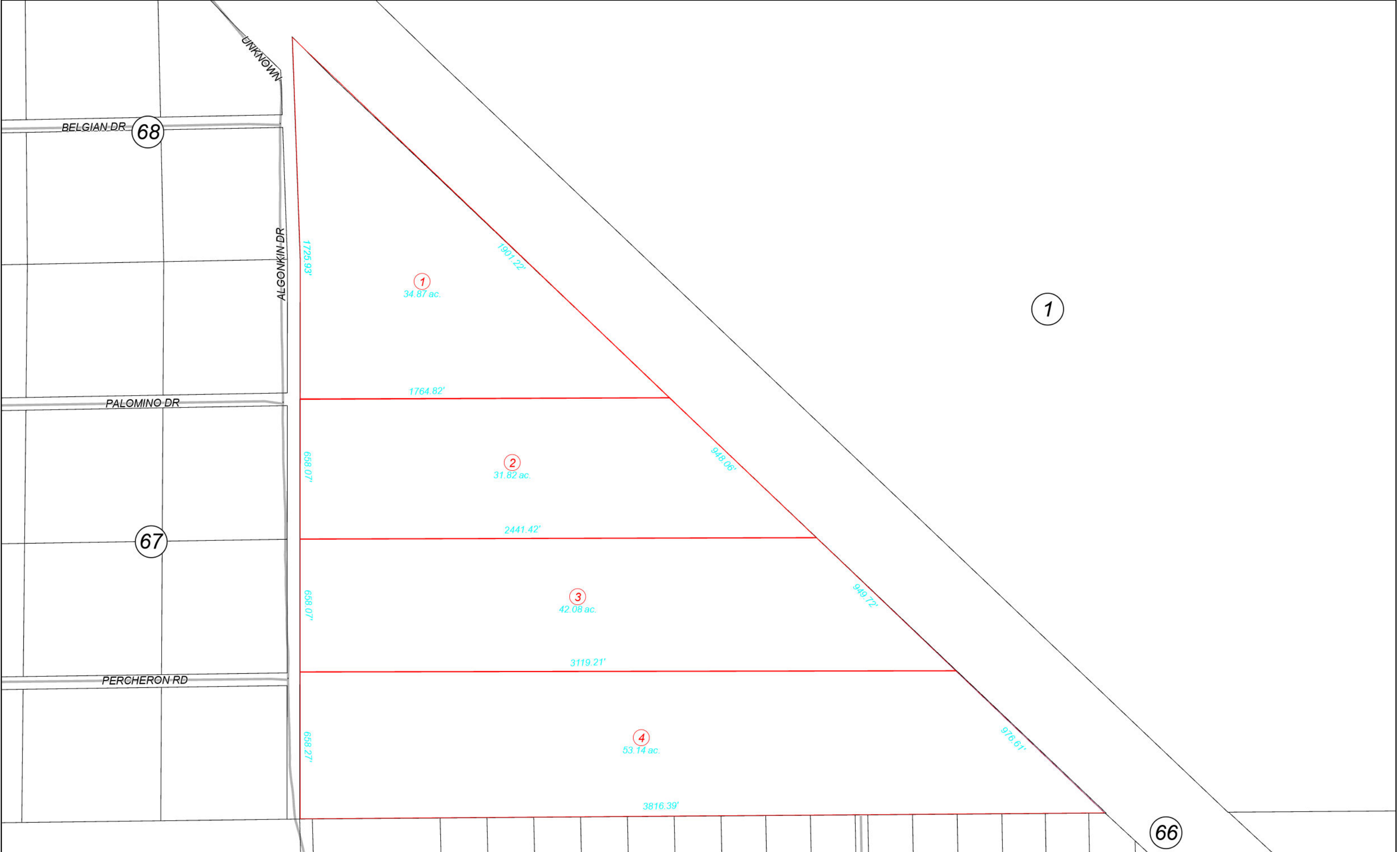


Map prepared by:
HUMBOLDT COUNTY ASSESSOR'S OFFICE
WINNEMUCCA, NEVADA 89445

8-73

1" = 400'
M.D.B. & M.

36N39E



66