

06	05	04	03	02	01
07	08	09	10	11	12
18	17	16	15	14	13
19	20	21	22	23	24
30	29	28	27	26	25
31	32	33	34	35	36



HUMBOLDT COUNTY

N1/2 NE1/4 SEC. 28 T.36N. R.38E.

Winnemucca

NOTE: This plat is for assessment purposes only and does not represent a survey of the lands on this plat.



Map prepared by:
HUMBOLDT COUNTY ASSESSOR'S OFFICE
WINNEMUCCA, NEVADA 89445

16-34

1"=200'

M.D.B. & M.

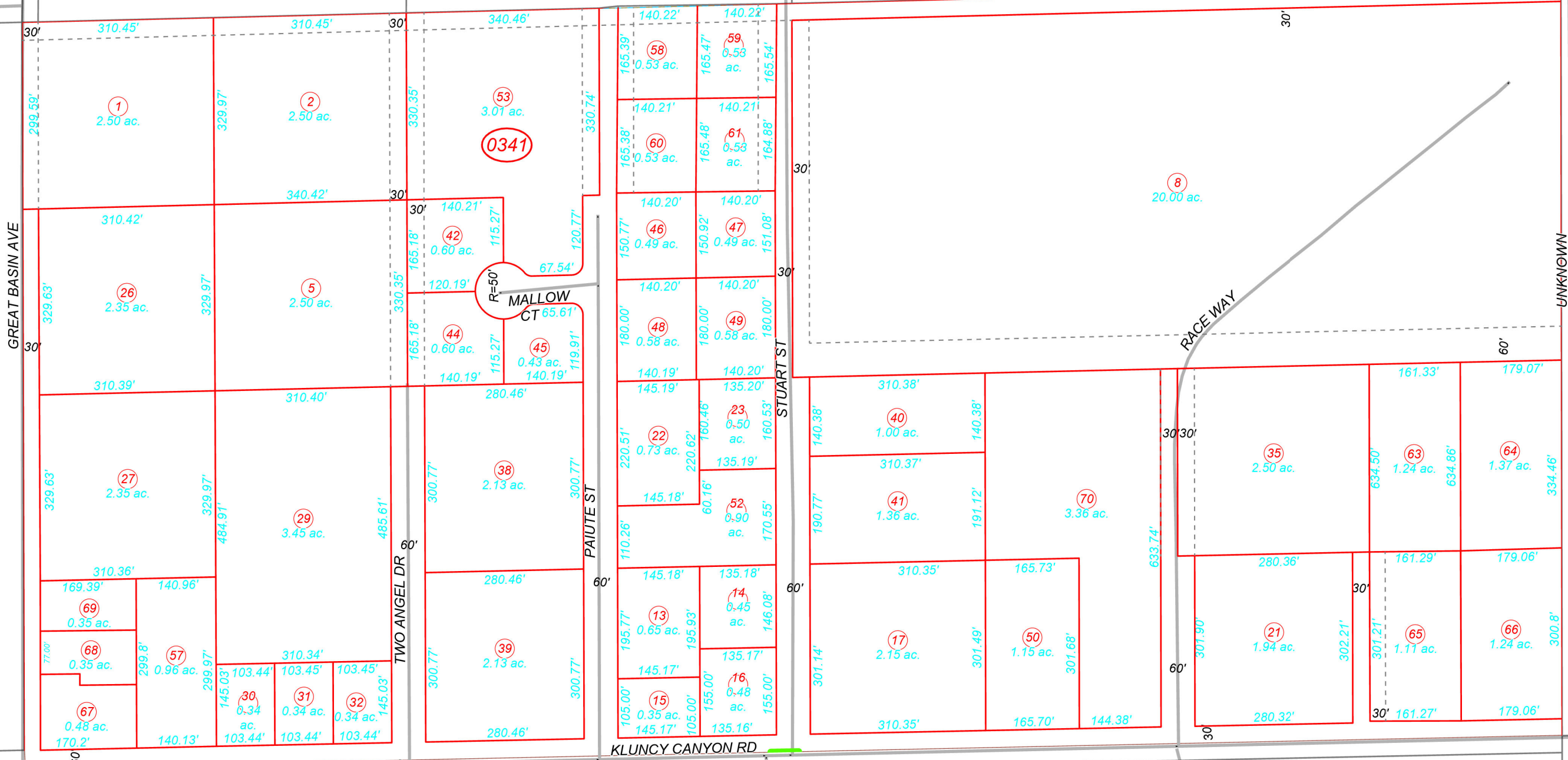
36N38E

36
Page 2

36
Page 1

37

HARDGRAVE LN



33
Page 1

35

60

44

14
Page 3