

06	05	04	03	02	01
07	08	09	10	11	12
18	17	16	15	14	13
19	20	21	22	23	24
30	29	28	27	26	25
31	32	33	34	35	36



HUMBOLDT COUNTY

PT. NE1/4 SEC. 31 T.35N. R.38E.

NOTE: This plat is for assessment purposes only and does not represent a survey of the lands on this plat.



Map prepared by:
HUMBOLDT COUNTY ASSESSOR'S OFFICE
WINNEMUCCA, NEVADA 89445

10-062

Page 1 of 2

1"=400'

M.D.B. & M.

54

ALICE LN

SABIN DR

64
Page 2

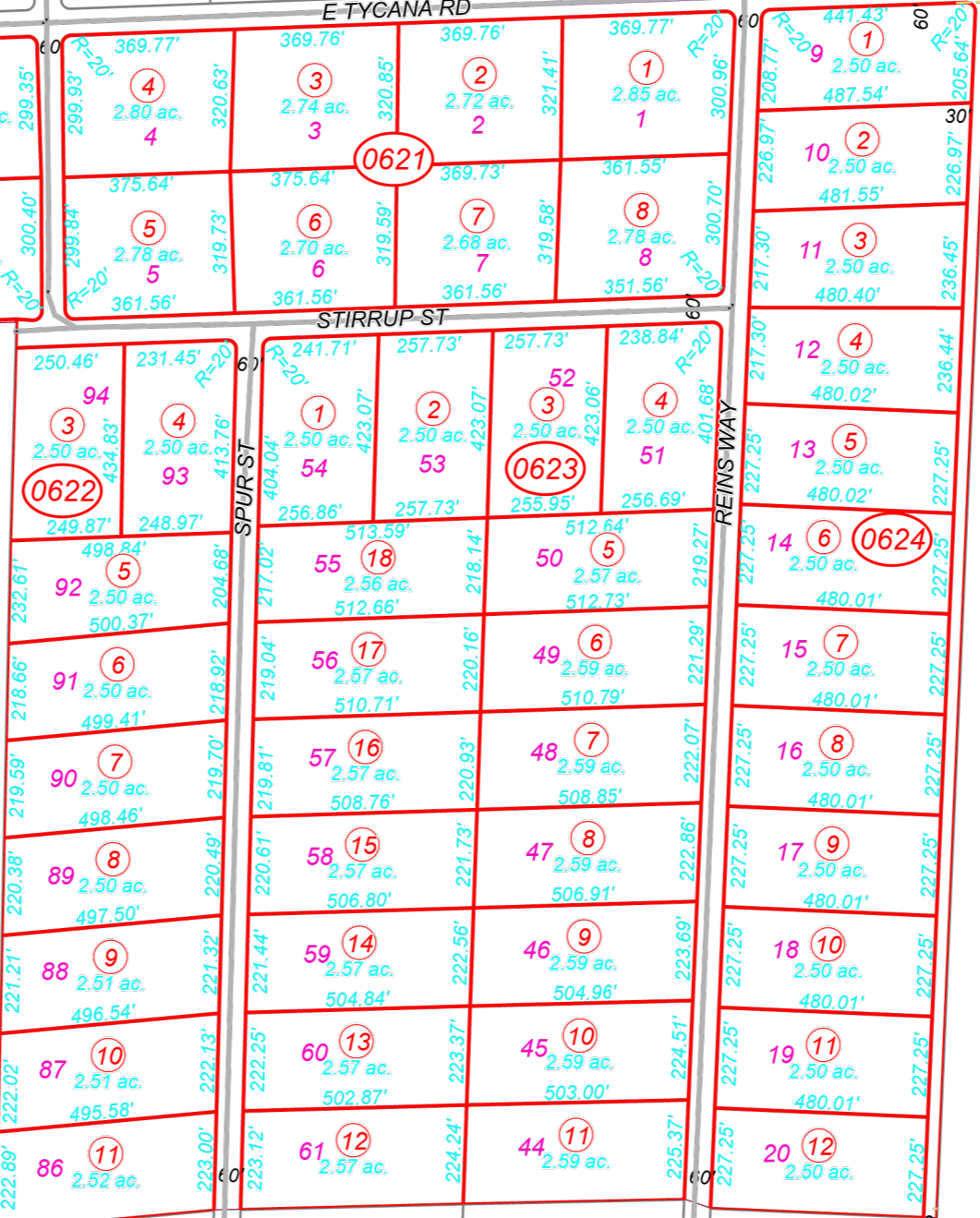
E TYCANA RD

STIRRUP ST

SPUR ST

REINS WAY

45



62
Page 2