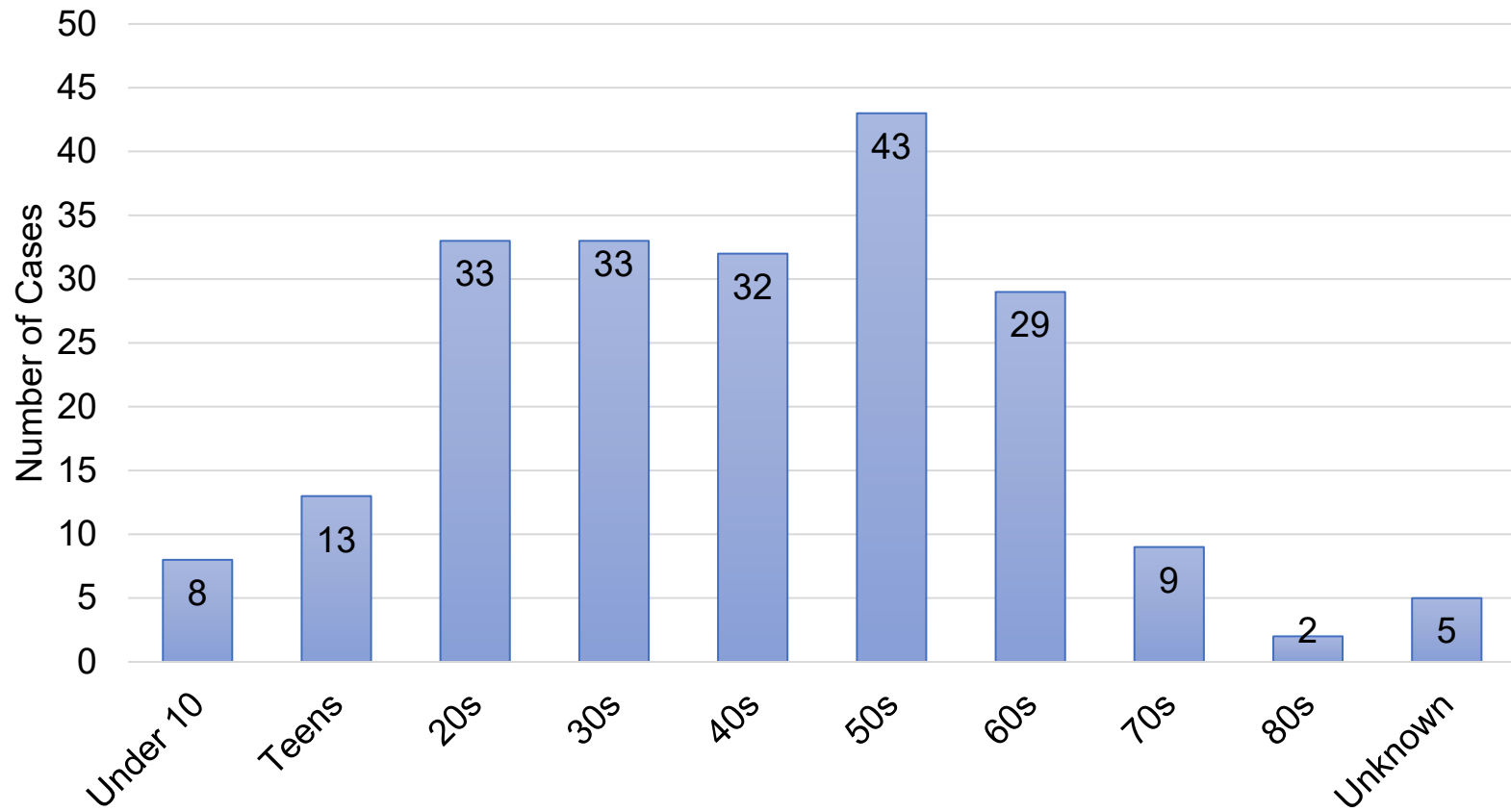
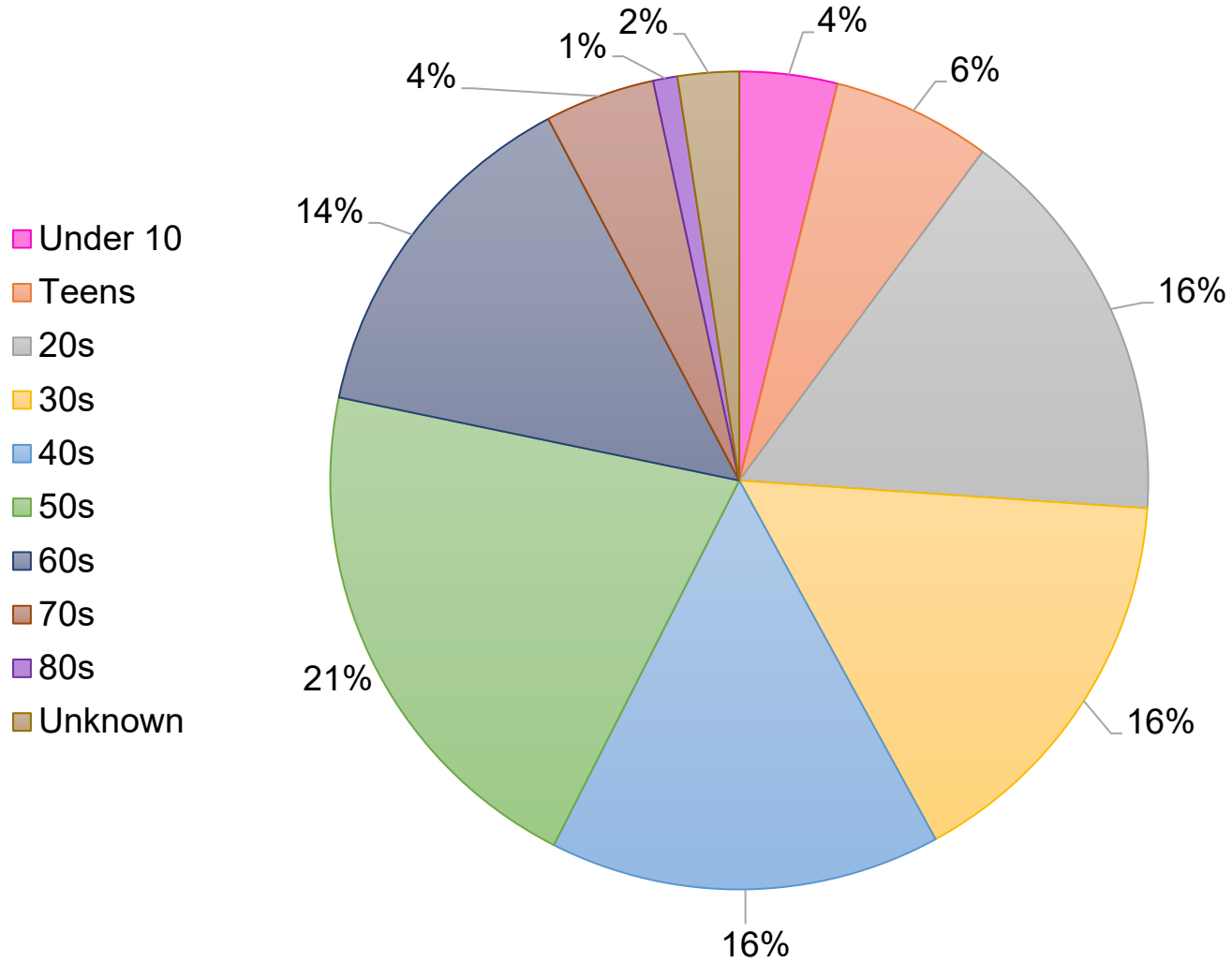


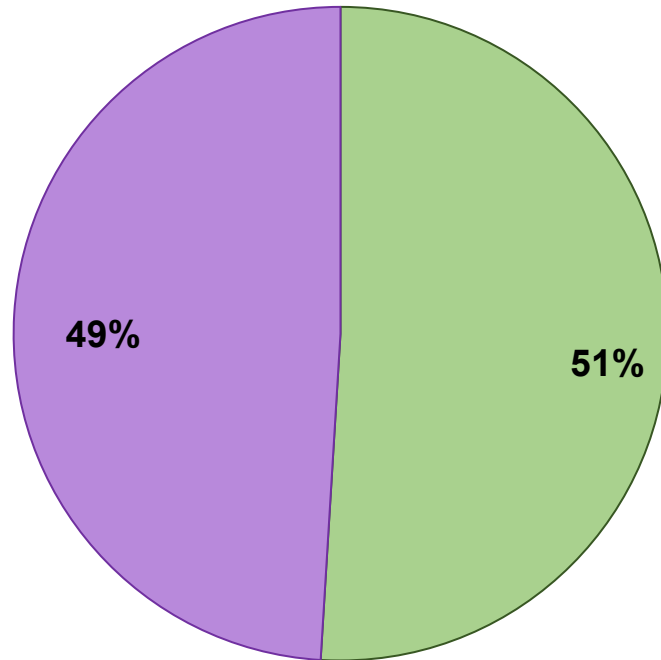
## Confirmed Cases by Age



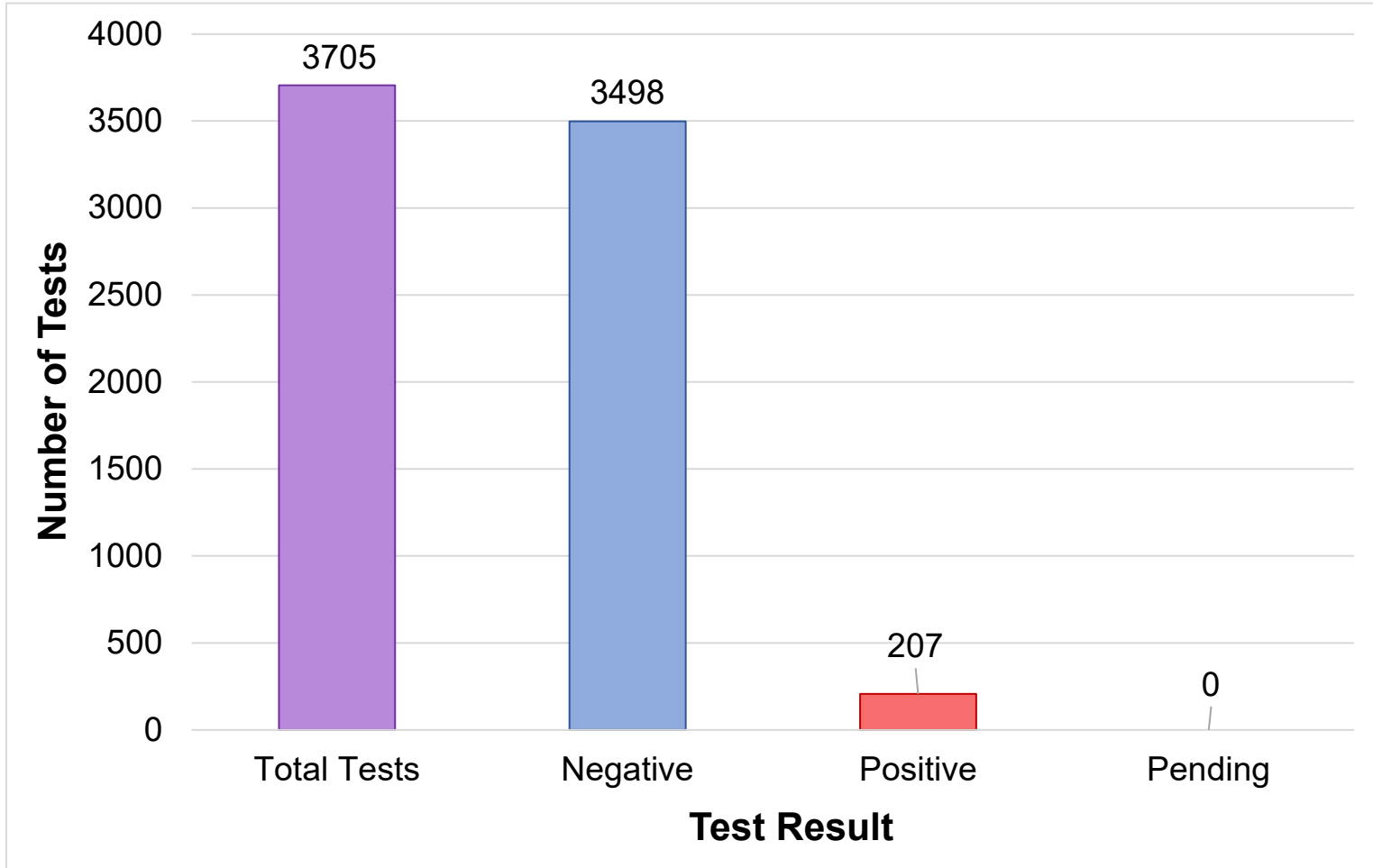
# Confirmed Cases by Age

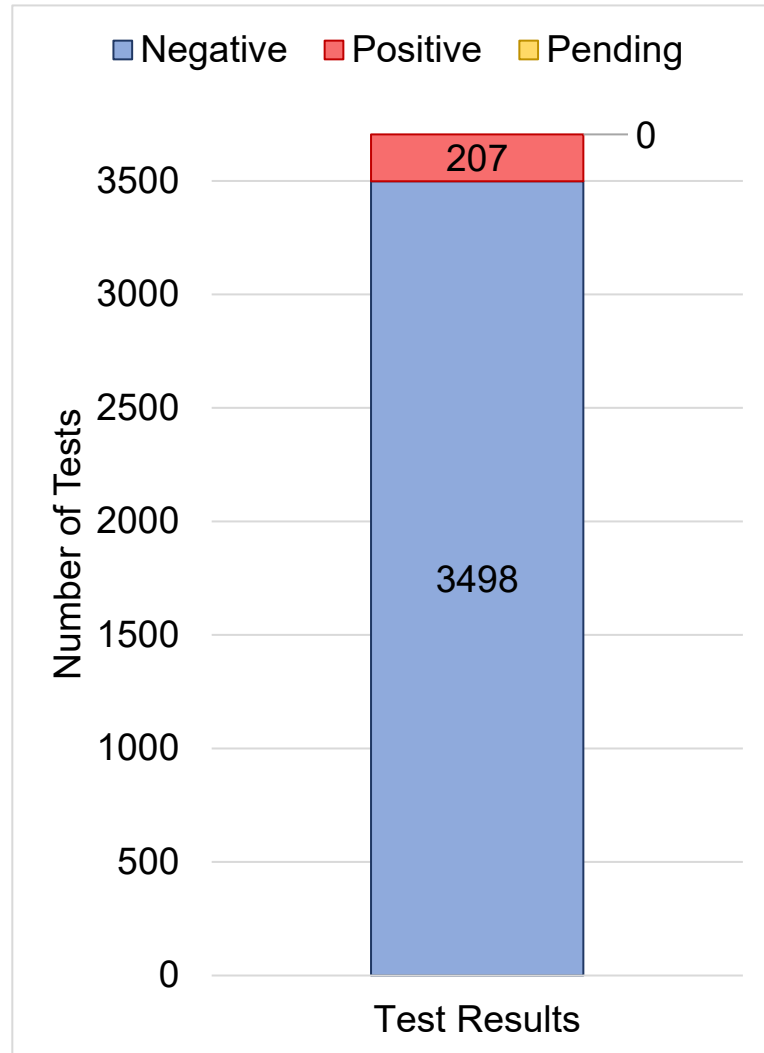
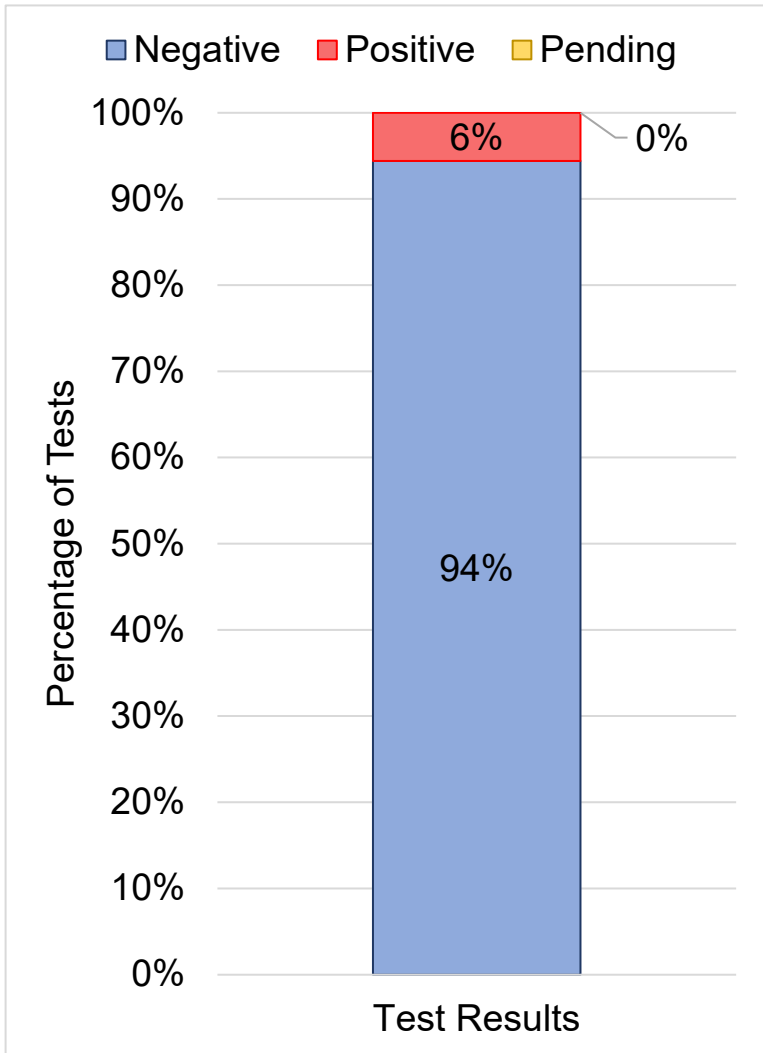


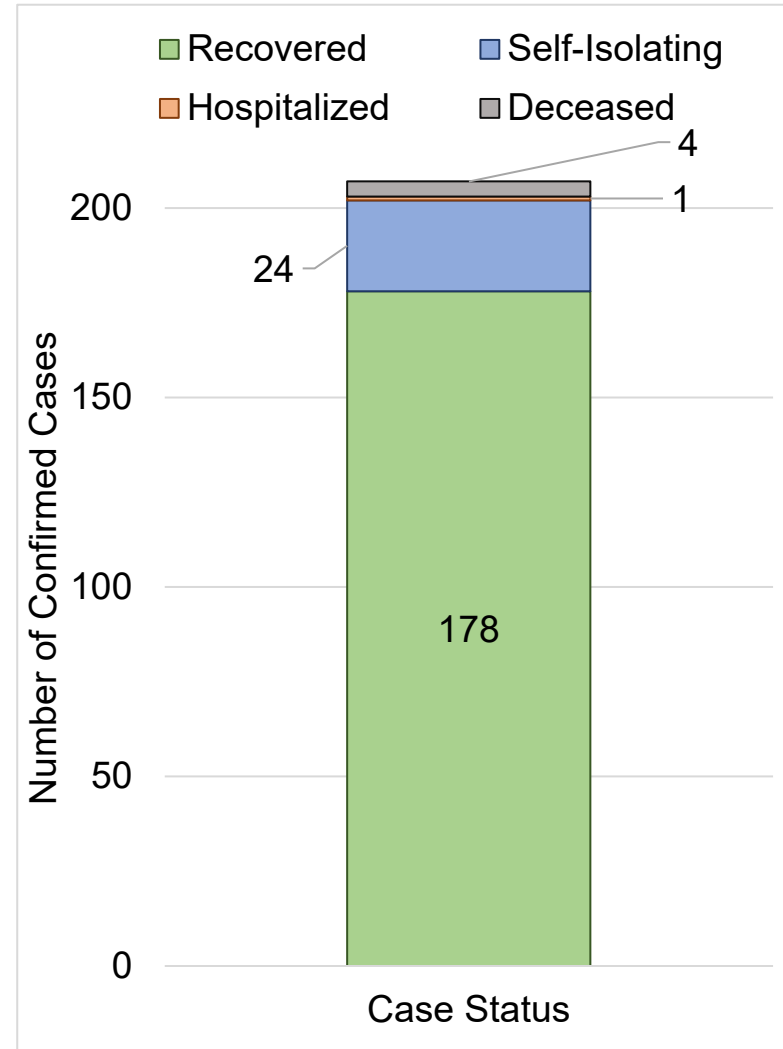
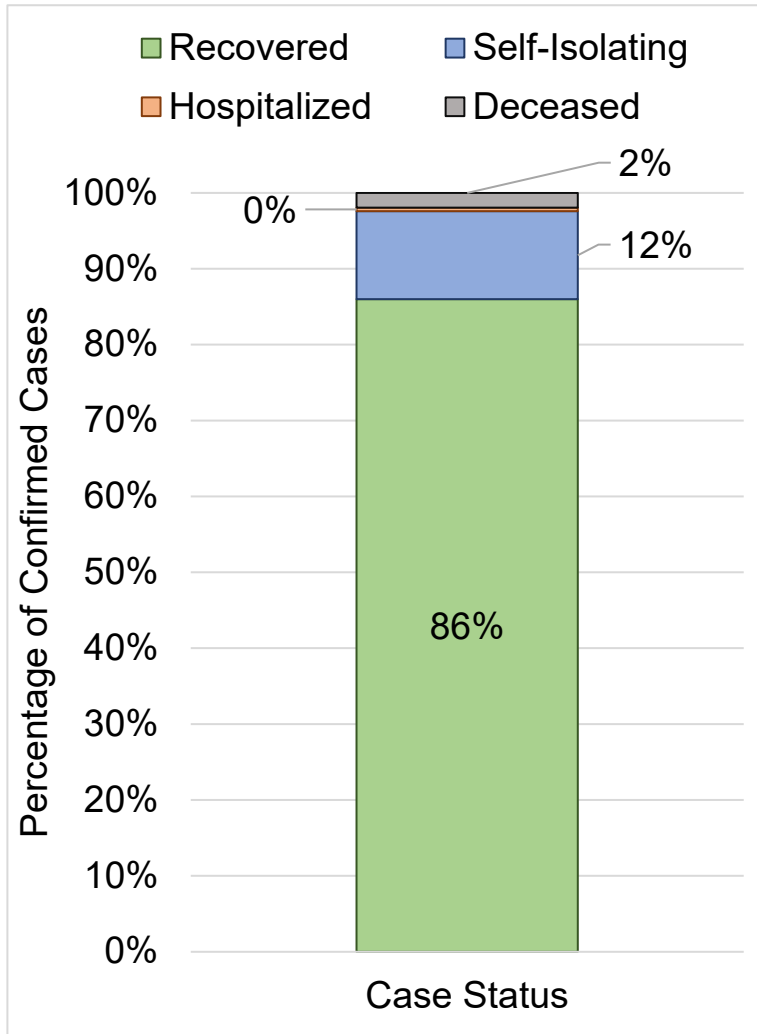
### Confirmed Cases



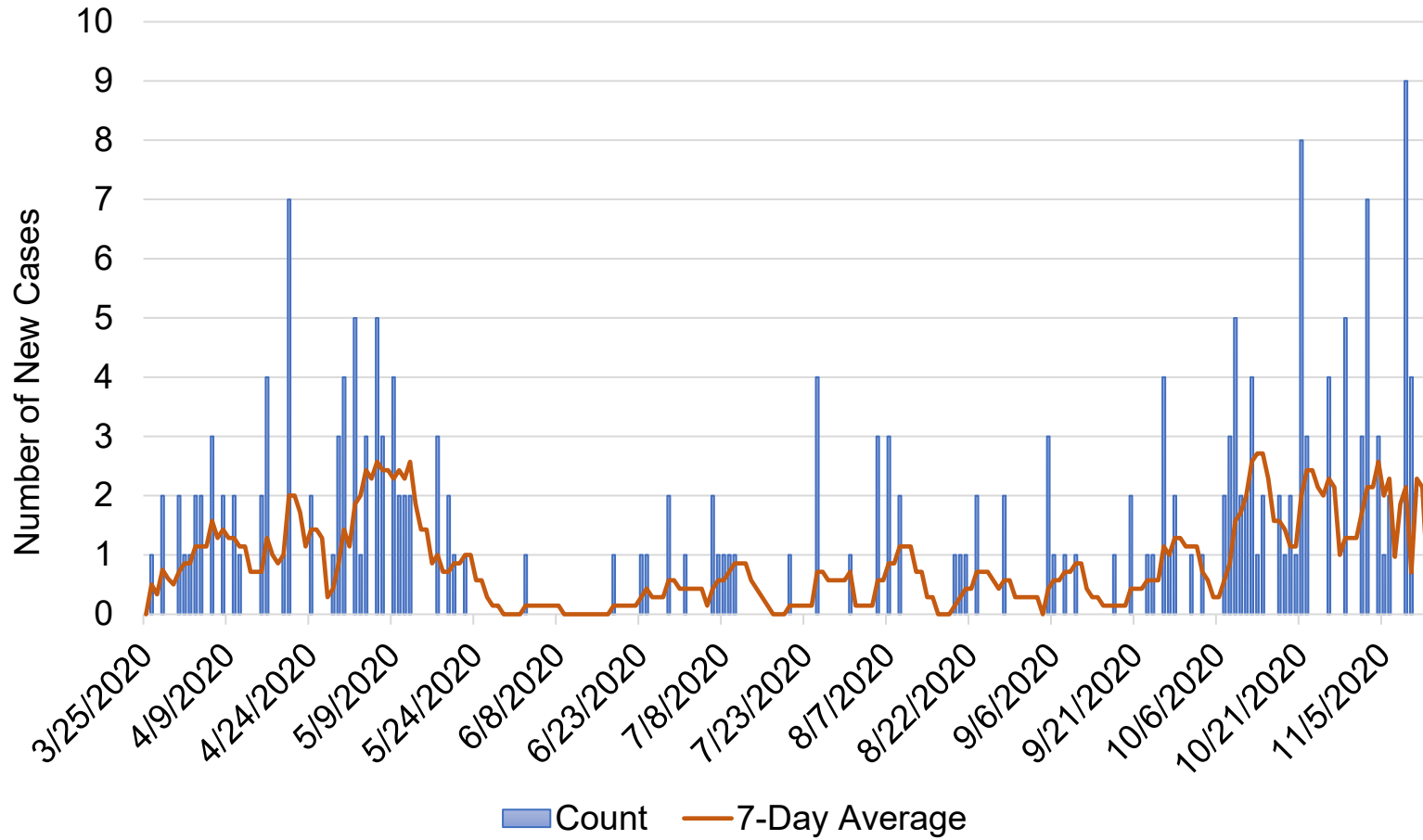
■ Male ■ Female



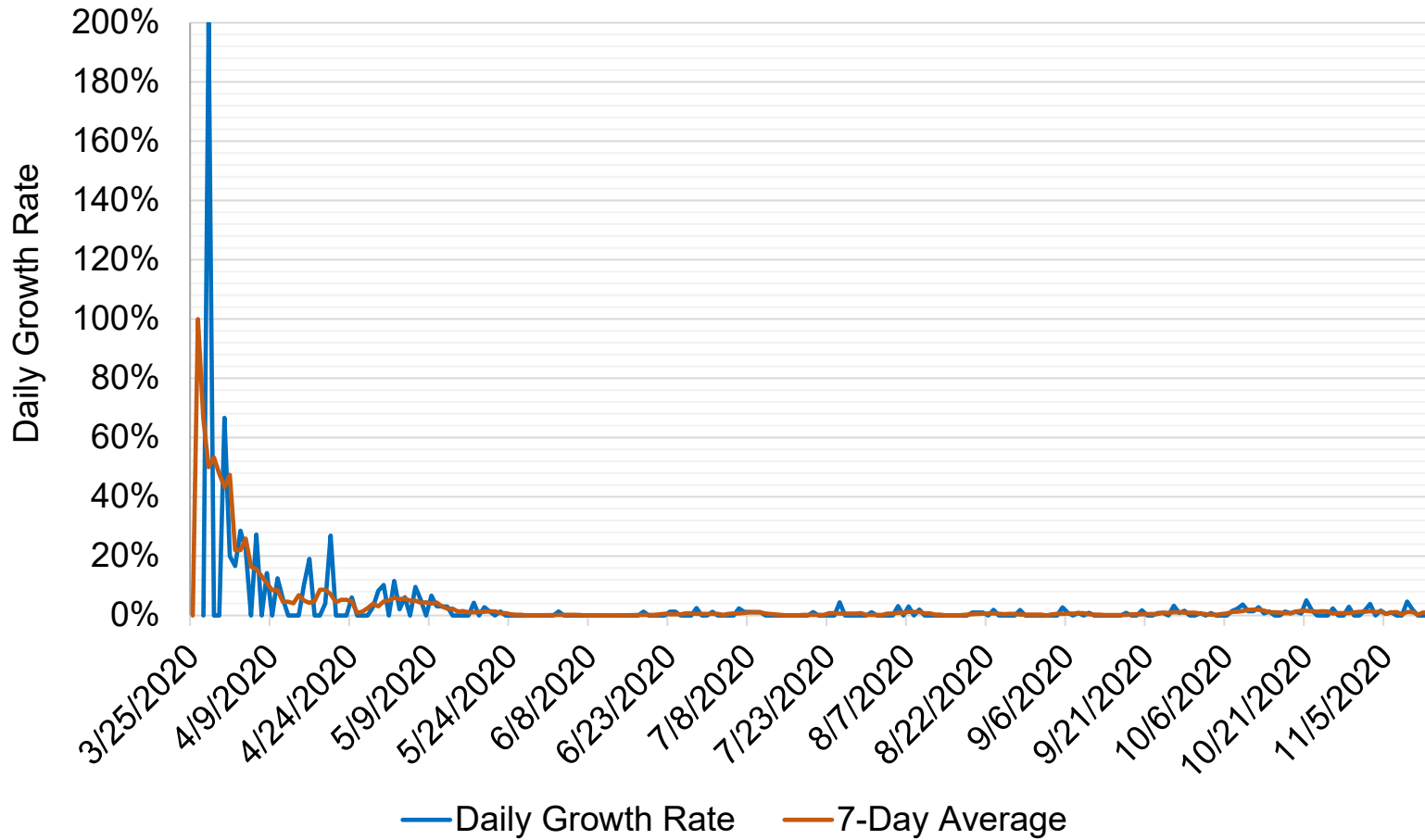




### New Cases by Day and Seven-Day Average

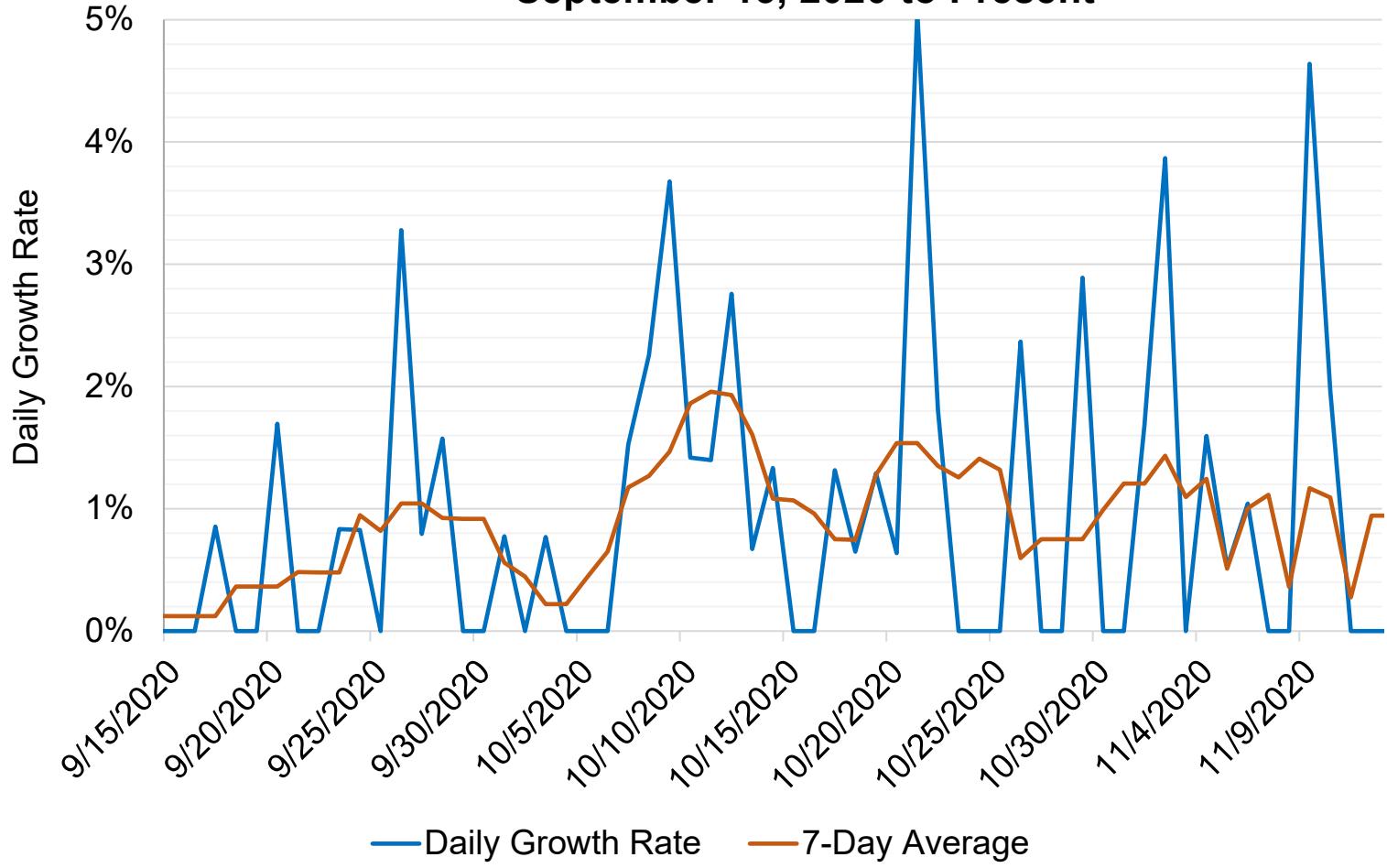


## Daily Growth Rate and 7-Day Average Growth Rate

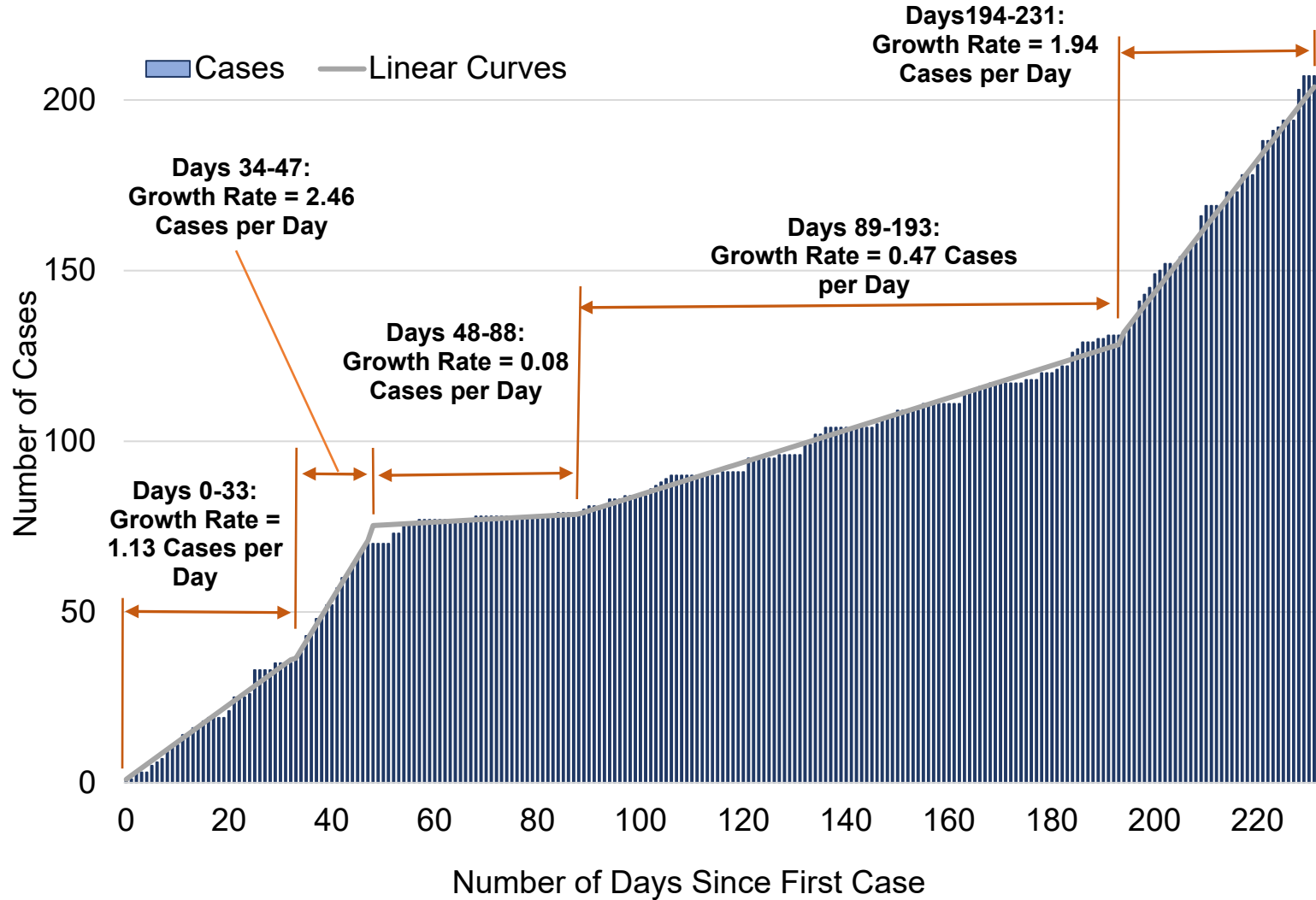




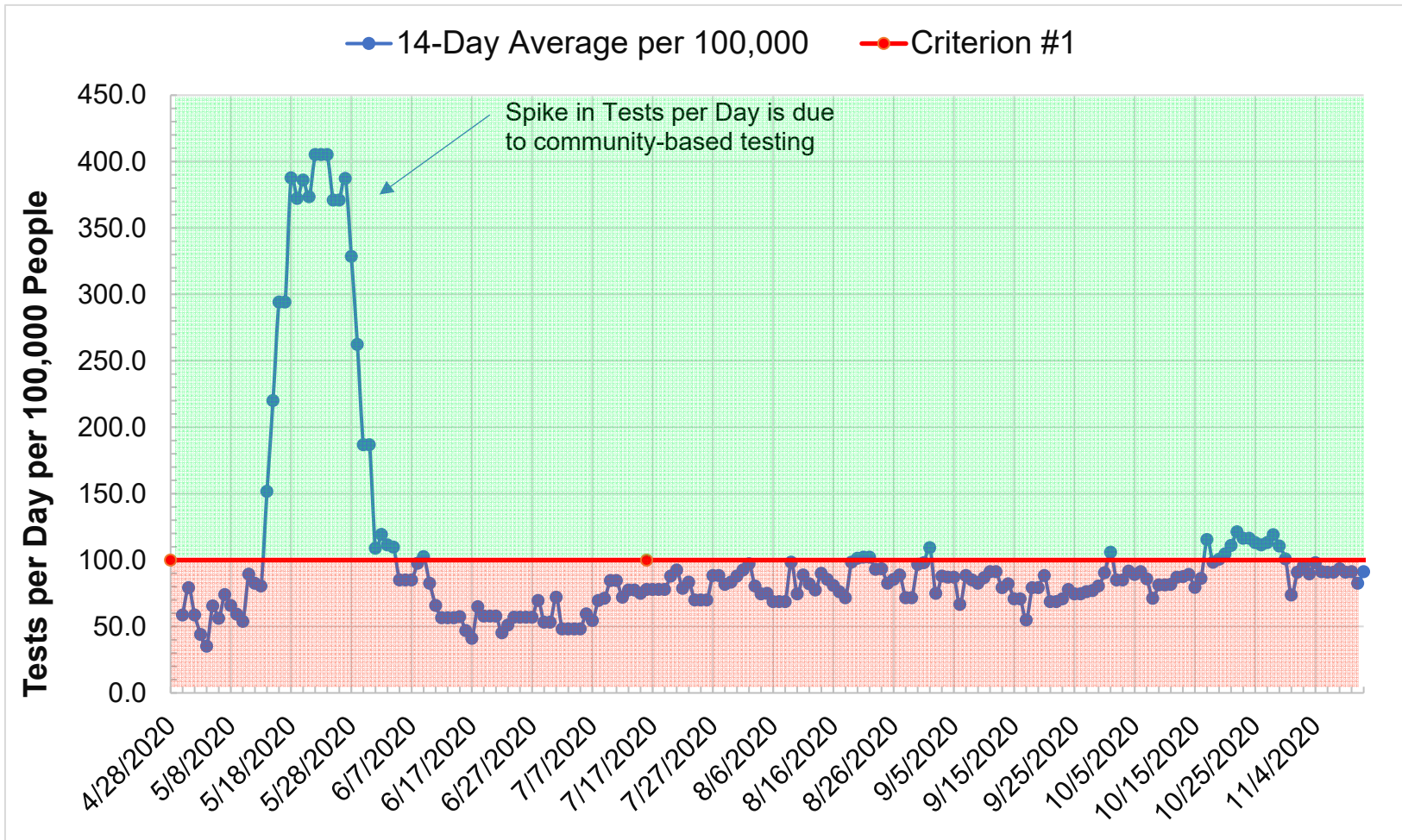
**Daily Growth Rate and 7-Day Average Growth Rate  
September 15, 2020 to Present**



# Cumulative Cases by Day

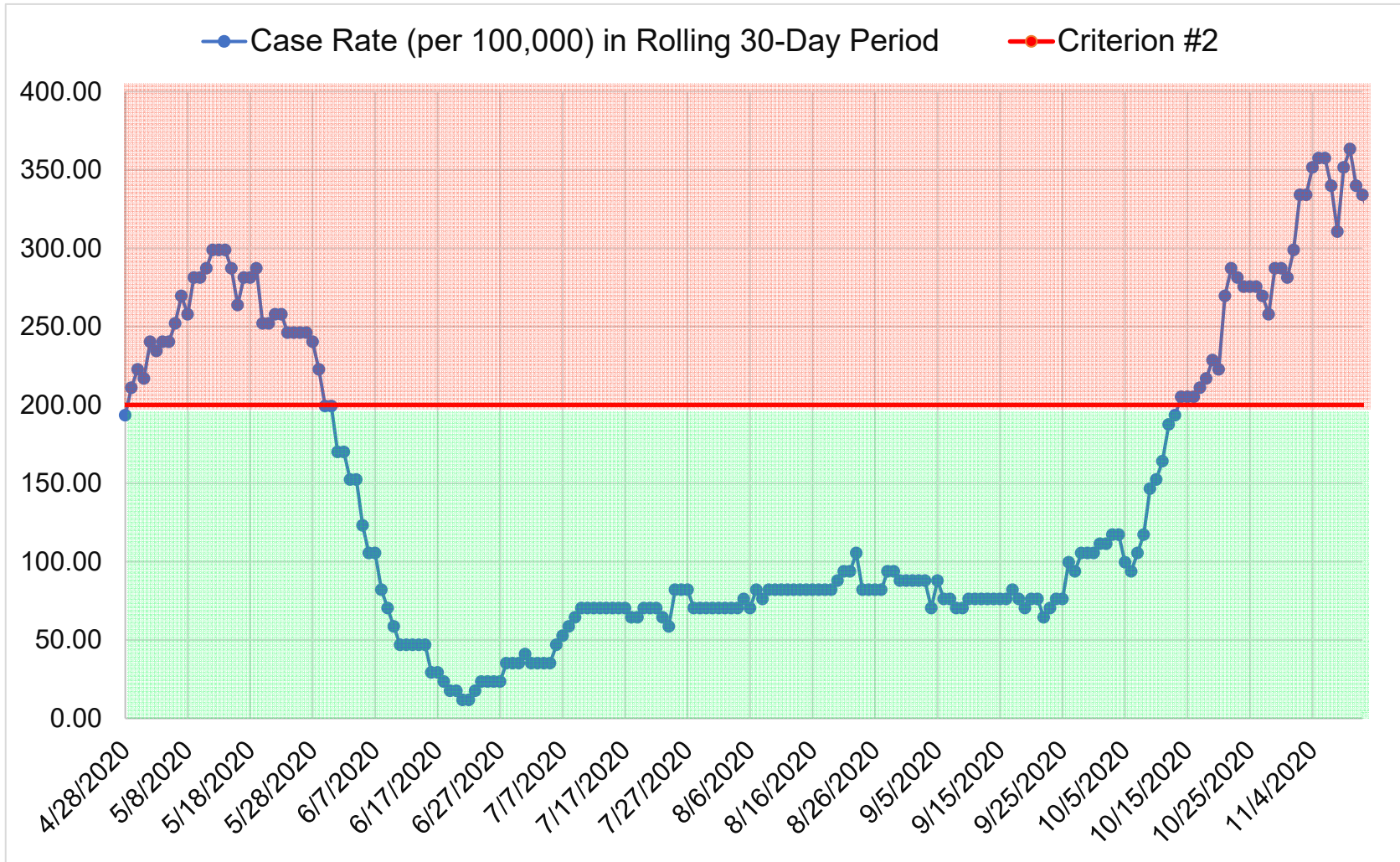


**Fail If: Average number of tests per day per 100,000 people (14-Day Average with 7-Day Lag) < 100**



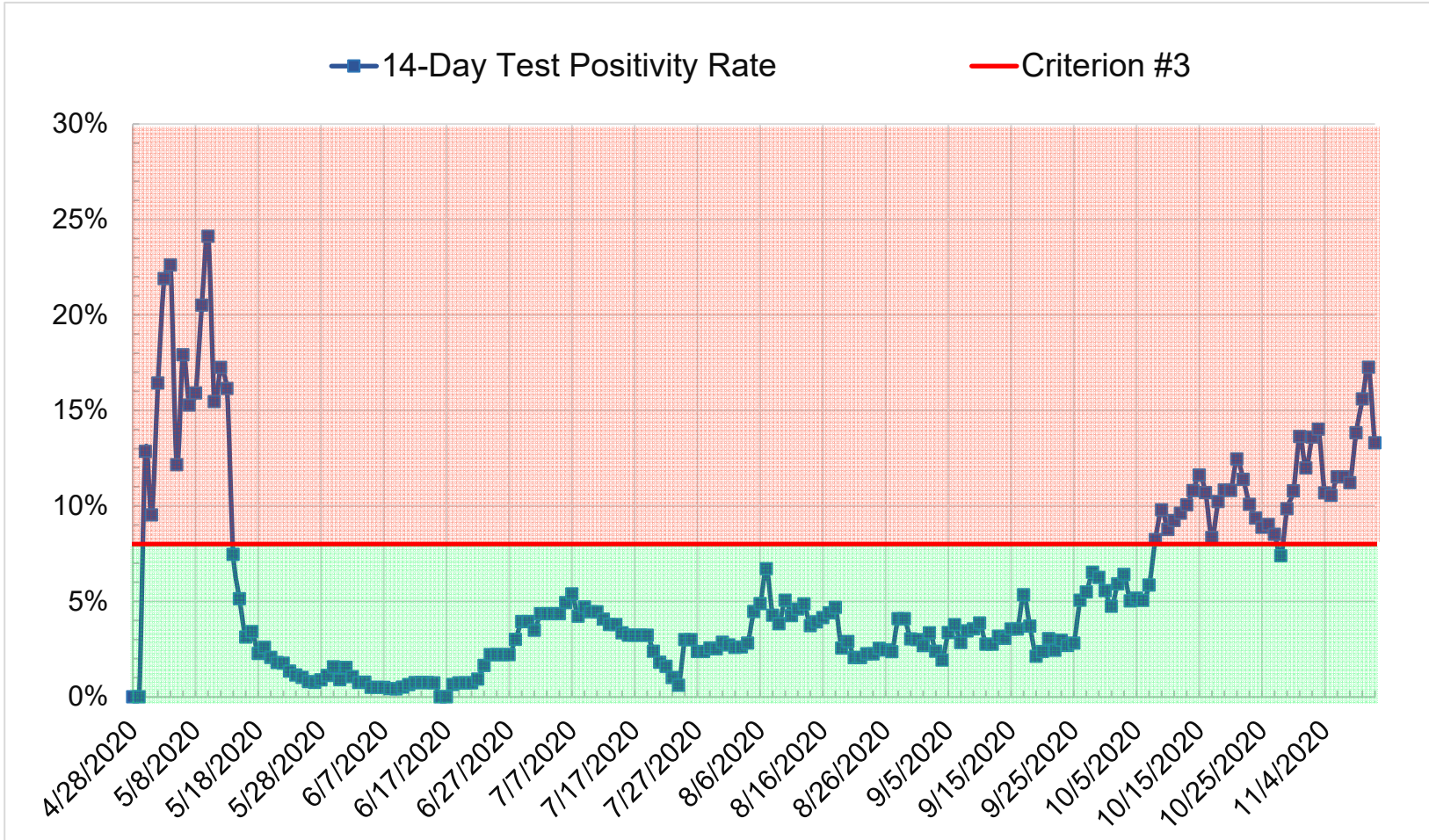
**FAIL**

### Fail If: Case Rate per 100,000 (Total in 30-day period) > 200



**FAIL**

**Fail If: Case Rate per 100,000 (Criterion #2) > 50 AND Testing Positivity > 8.0%**



**FAIL**

# Wastewater Testing

