

# HUMBOLDT COUNTY

T.36N. R.26E.

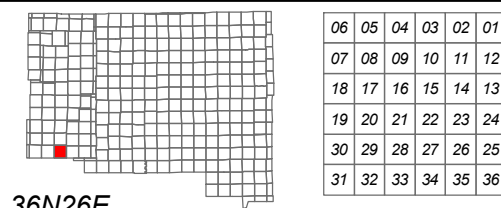
NOTE: This plat is for assessment purposes only and does not represent a survey of the lands on this plat.



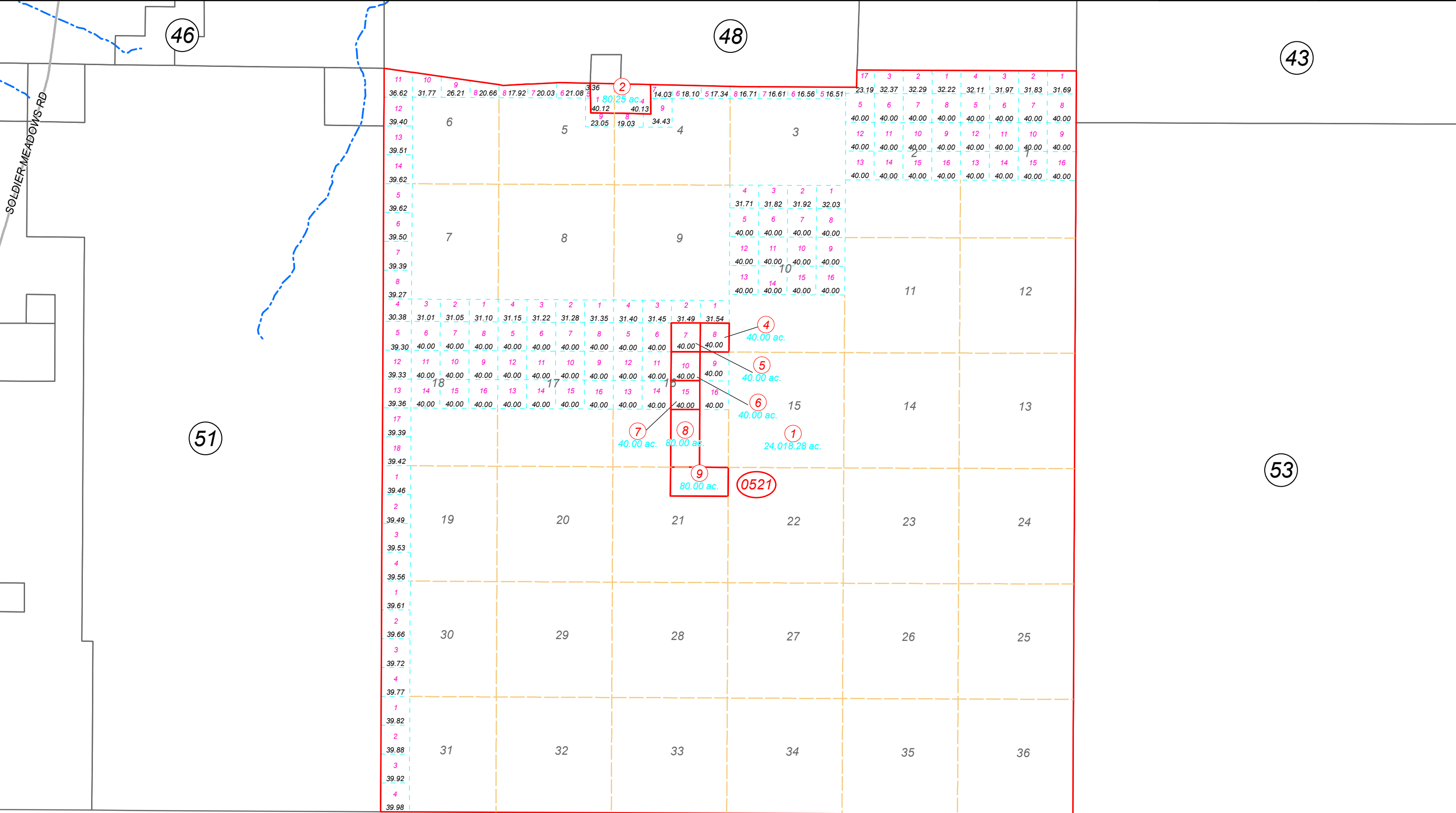
Map Prepared by:  
HUMBOLDT COUNTY ASSESSOR'S OFFICE  
WINNEMUCCA, NEVADA 89445

## 17-52

1"=4,000'  
M.D.B. & M.



36N26E



G COUNTY

PERSHING COUNTY

PERSHING COUNTY