

06	05	04	03	02	01
07	08	09	10	11	12
18	17	16	15	14	13
19	20	21	22	23	24
30	29	28	27	26	25
31	32	33	34	35	36



HUMBOLDT COUNTY

SE1/4 SE1/4 SEC. 29 T.36N. R.38E.

Skyland Estates Sub., Skyland Estates Sub. Unit 2 & 3 -

NOTE: This plat is for assessment purposes only and does not represent a survey of the lands on this plat.



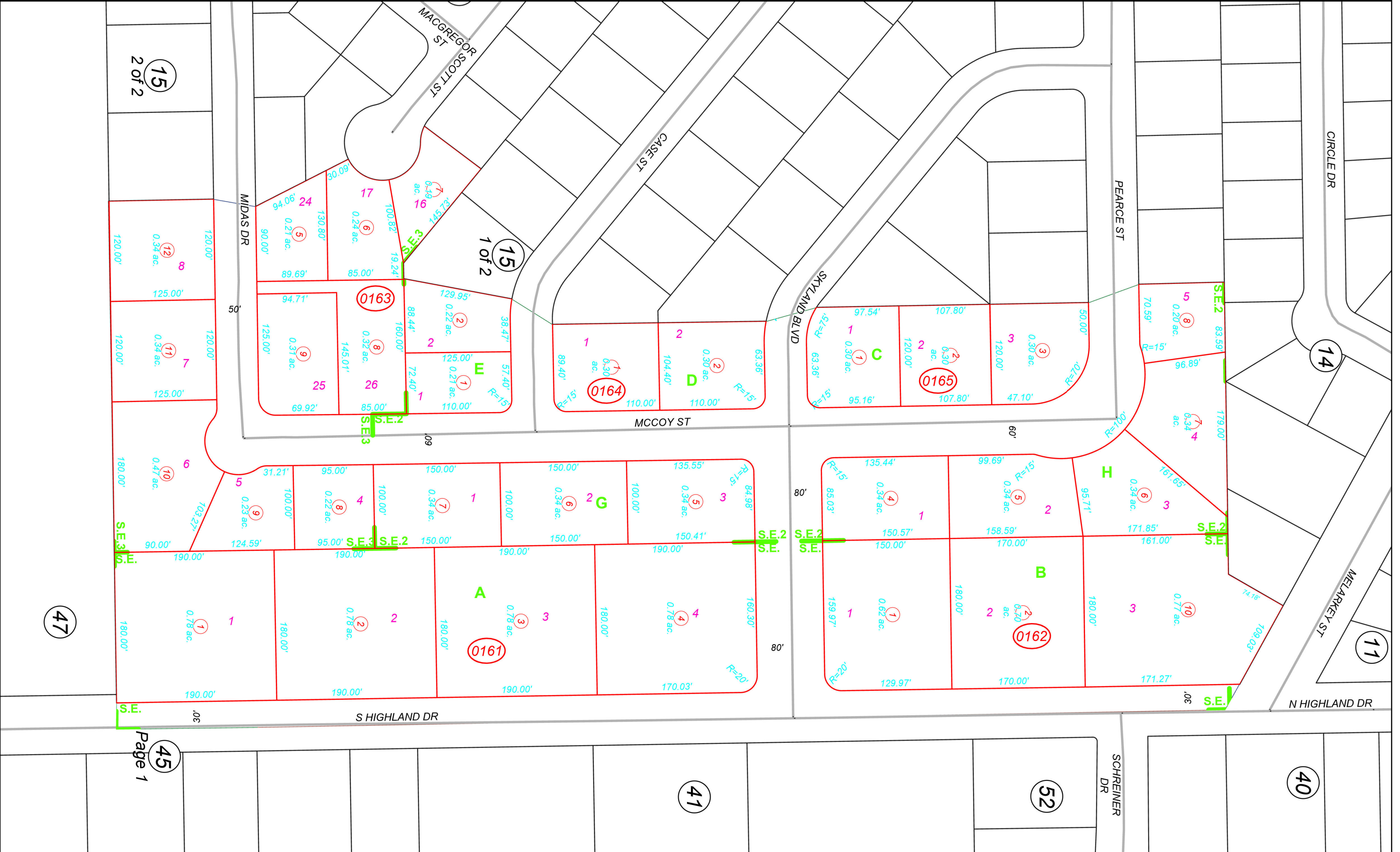
Map prepared by:
HUMBOLDT COUNTY ASSESSOR'S OFFICE
WINNEMUCCA, NEVADA 89445

16-16

1"=100'

M.D.B. & M.

36N38E



Page 1
45