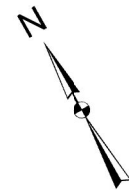


06	05	04	03	02	01
07	08	09	10	11	12
18	17	16	15	14	13
19	20	21	22	23	24
30	29	28	27	26	25
31	32	33	34	35	36



HUMBOLDT COUNTY

PT. NW1/4 NW1/4 SEC. 29

Winnemucca

NOTE: This plat is for assessment purposes only and does not represent a survey of the lands on this plat.



Map prepared by:
HUMBOLDT COUNTY ASSESSOR'S OFFICE
WINNEMUCCA, NEVADA 89445

15-39

Page 2 of 2

1"=100'

M.D.B. & M.

36N38E

39
Page 1

E FIFTH ST

BRIDGE ST

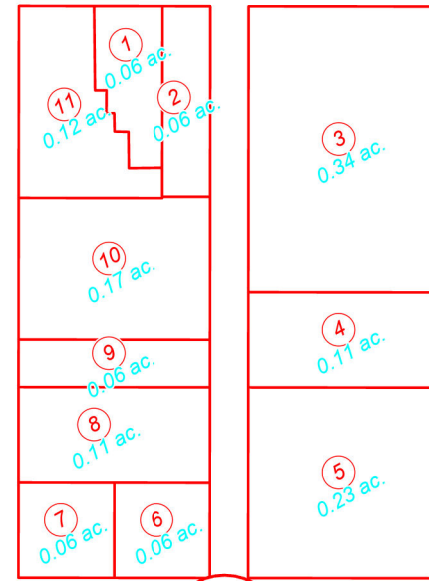
E RAILROAD ST

E HASKELL ST

4

8

S BRIDGE ST



0397

MELARKEY ST

6

MELARKEY ST



0398

W FIFTH ST

W SIXTH ST

W RAILROAD ST

W HASKELL ST

LAY ST

LAY ST

41

40

7