

HUMBOLDT COUNTY

N1/2 SE1/4 SEC. 12 T.35N. R.37E.

Country Estates Sub.

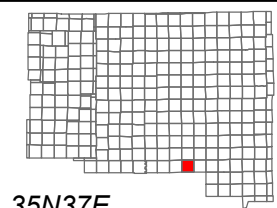
NOTE: This plat is for assessment purposes only and does not represent a survey of the lands on this plat.



Map Prepared by:
HUMBOLDT COUNTY ASSESSOR'S OFFICE
WINNEMUCCA, NEVADA 89445

13-50

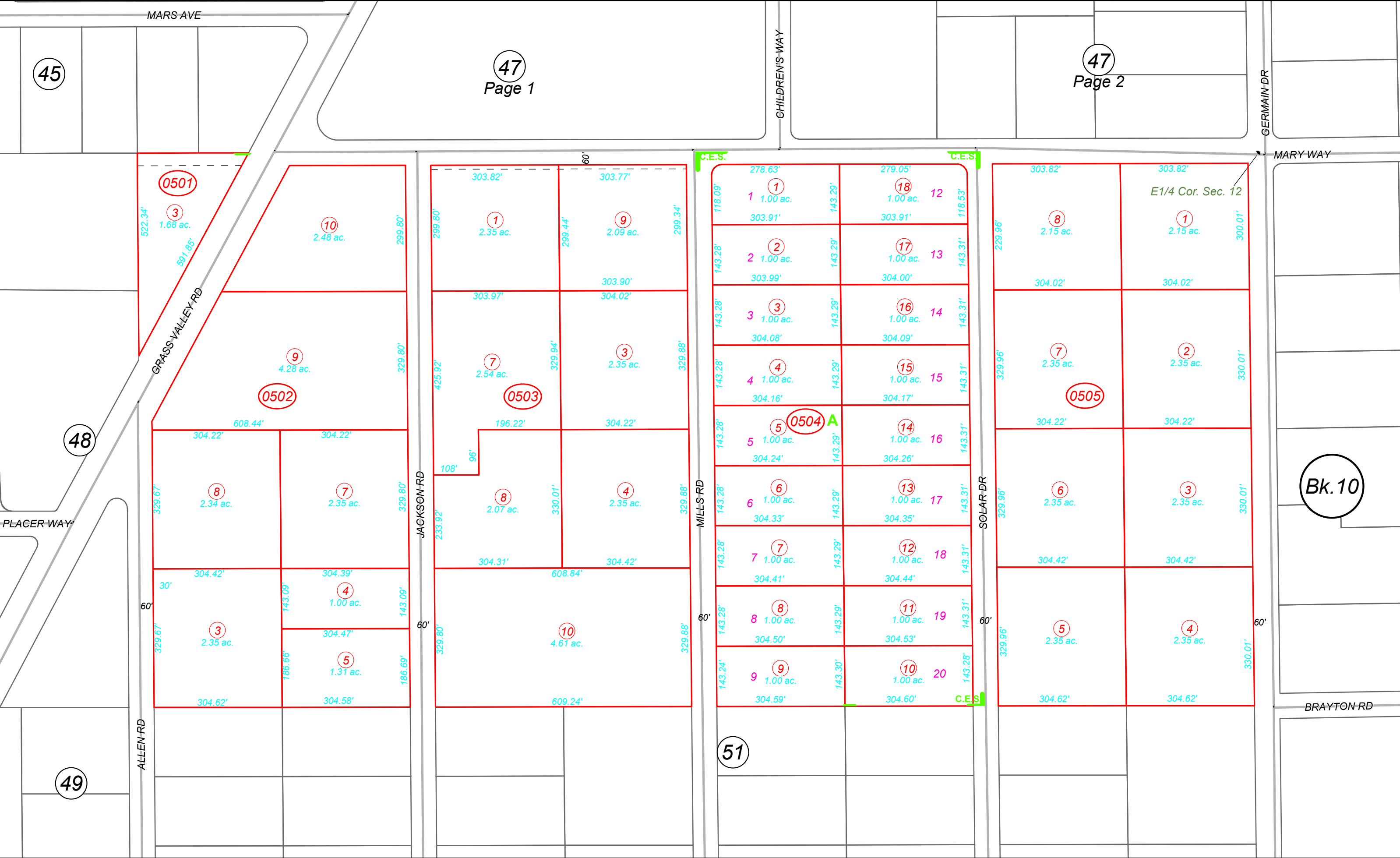
1"=200'
M.D.B. & M.



06	05	04	03	02	01
07	08	09	10	11	12
18	17	16	15	14	13
19	20	21	22	23	24
30	29	28	27	26	25
31	32	33	34	35	36



35N37E



45

47
Page 1

47
Page 2

48

49

Bk. 10

0501

0502

0503

0504 A

0505

51

3

10

1

9

1

18

8

1

9

7

3

2

17

7

2

8

7

8

4

3

16

6

3

3

5

10

5

14

5

4

304.62'

304.58'

609.24'

304.59'

304.60'

304.62'

304.62'

304.42'

304.39'

608.84'

304.41'

304.44'

304.42'

304.42'

304.22'

304.22'

304.22'

304.24'

304.26'

304.22'

304.22'

303.97'

304.02'

303.97'

304.02'

303.91'

303.91'

304.02'

304.02'

522.34'

299.80'

299.80'

299.44'

278.63'

279.05'

303.82'

303.82'

597.85'

329.80'

425.92'

329.94'

118.09'

118.53'

229.96'

300.01'

329.67'

329.80'

329.88'

329.88'

143.28'

143.31'

329.96'

330.01'

329.67'

329.80'

329.88'

329.88'

143.28'

143.31'

329.96'

330.01'

329.67'

329.80'

329.88'

329.88'

143.28'

143.31'

329.96'

330.01'

304.62'

304.58'

609.24'

304.59'

304.60'

304.62'

304.62'

304.42'

304.39'

608.84'

304.41'

304.44'

304.42'

304.42'

304.22'

304.22'

304.22'

304.24'

304.26'

304.22'

304.22'

303.97'

304.02'

303.97'

304.02'

303.91'

303.91'

304.02'

304.02'

522.34'

299.80'

299.80'

299.44'

278.63'

279.05'

303.82'

303.82'

597.85'

329.80'

425.92'

329.94'

118.09'

118.53'

229.96'

300.01'

329.67'

329.80'

329.88'

329.88'

143.28'

143.31'

329.96'

330.01'

329.67'

329.80'

329.88'

329.88'

143.28'

143.31'

329.96'

330.01'

329.67'

329.80'

329.88'

329.88'

143.28'

143.31'

329.96'

330.01'

304.62'

304.58'

609.24'

304.59'

304.60'

304.62'

304.62'

304.42'

304.39'

608.84'

304.41'

304.44'

304.42'

304.42'

304.22'

304.22'

304.22'

304.24'

304.26'

304.22'

304.22'

303.97'

304.02'

303.97'

304.02'

303.91'

303.91'

304.02'

304.02'

522.34'

299.80'

299.80'

299.44'

278.63'

279.05'

303.82'

303.82'

597.85'

329.80'

425.92'

329.94'

118.09'

118.53'

229.96'

300.01'

329.67'

329.80'

329.88'

329.88'

143.28'

143.31'

329.96'

330.01'

329.67'

329.80'

329.88'

329.88'

143.28'

143.31'

329.96'

330.01'

329.67'

329.80'

329.88'

329.88'

143.28'

143.31'

329.96'

330.01'

304.62'

304.58'

609.24'

304.59'

304.60'

304.62'

304.62'

304.42'

304.39'

608.84'

304.41'

304.44'

304.42'

304.42'

304.22'

304.22'

304.22'

304.24'

304.26'

304.22'

304.22'

303.97'

304.02'

303.97'

304.02'

303.91'

303.91'

304.02'

304.02'

522.34'

299.80'

299.80'

299.44'

278.63'

279.05'

303.82'

303.82'

597.85'

329.80'

425.92'