

HUMBOLDT COUNTY

PT. E 1/2 SEC. 11 T.35N. R.37E.

Gold Country Estates - Phase 1

NOTE: This plat is for assessment purposes only and does not represent a survey of the lands on this plat.



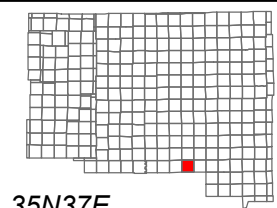
Map Prepared by:
HUMBOLDT COUNTY ASSESSOR'S OFFICE
WINNEMUCCA, NEVADA 89445

13-39

Page 2 of 2

1"=120'

M.D.B. & M.



06	05	04	03	02	01
07	08	09	10	11	12
18	17	16	15	14	13
19	20	21	22	23	24
30	29	28	27	26	25
31	32	33	34	35	36



35N37E

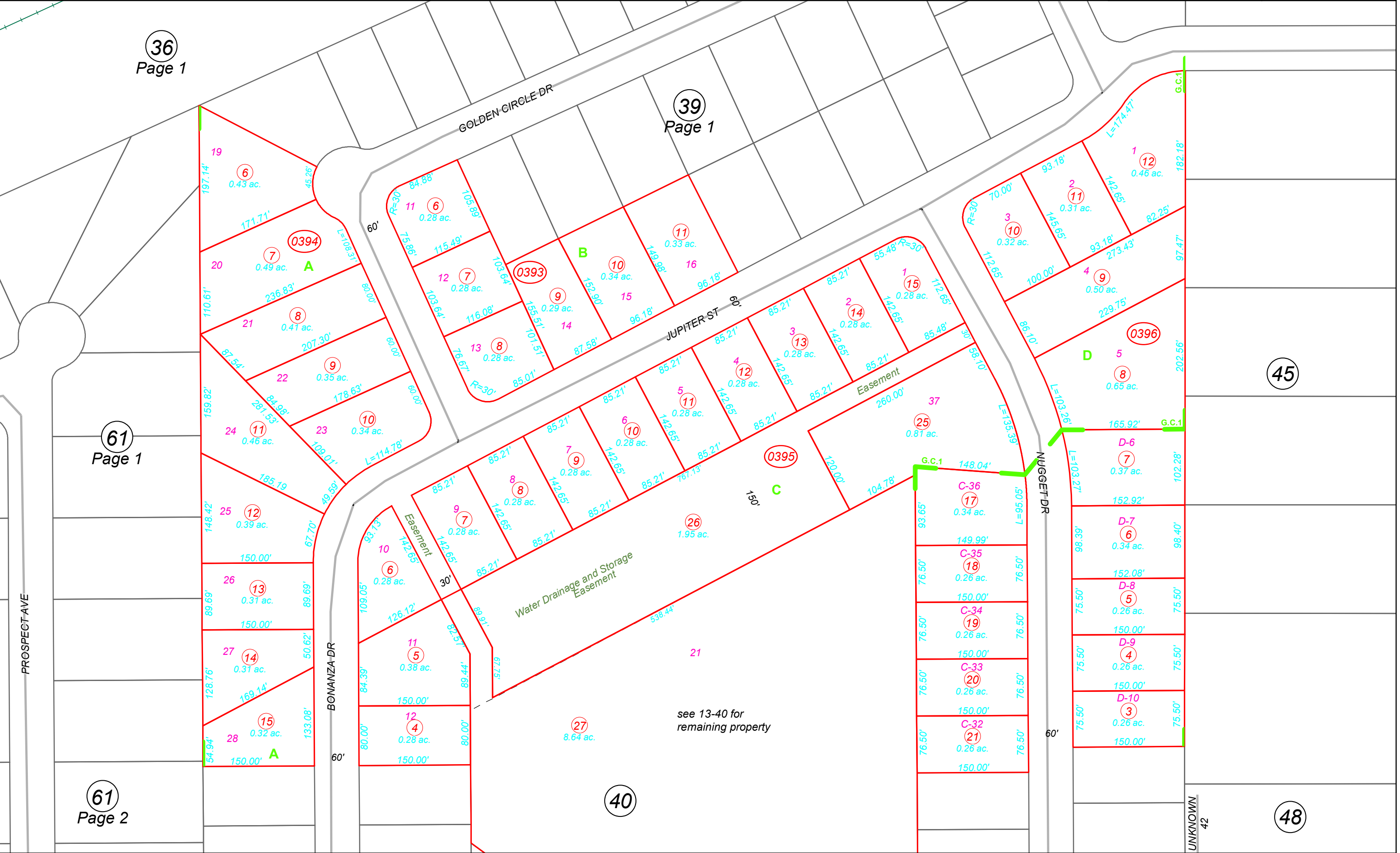
36
Page 1

39
Page 1

45

40

48



61
Page 1

61
Page 2

see 13-40 for remaining property