

HUMBOLDT COUNTY

PT. NW1/4 SEC. 34 T.36N. R.37E.

NOTE: This plat is for assessment purposes only and does not represent a survey of the lands on this plat.



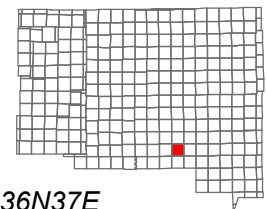
Map Prepared by:
HUMBOLDT COUNTY ASSESSOR'S OFFICE
WINNEMUCCA, NEVADA 89445

10-69

Page 1 of 2

1"=300'

M.D.B. & M.



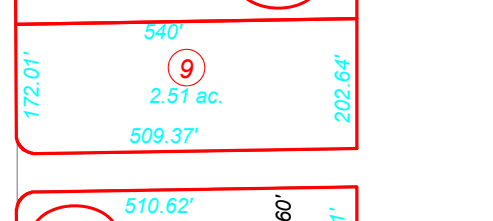
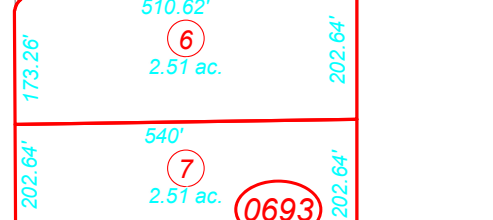
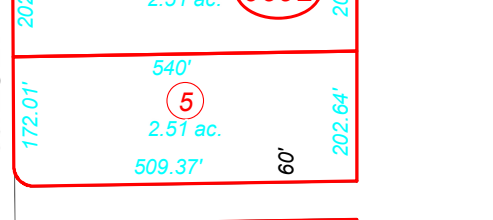
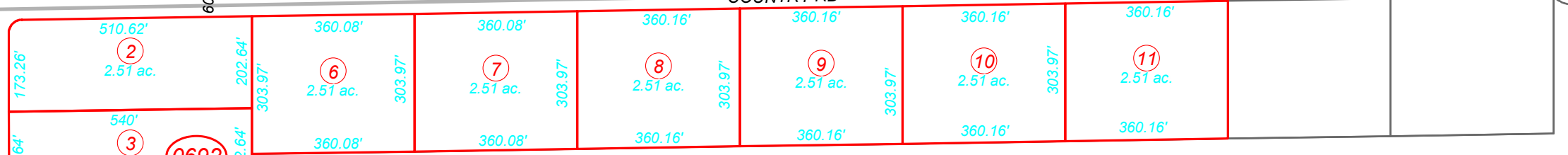
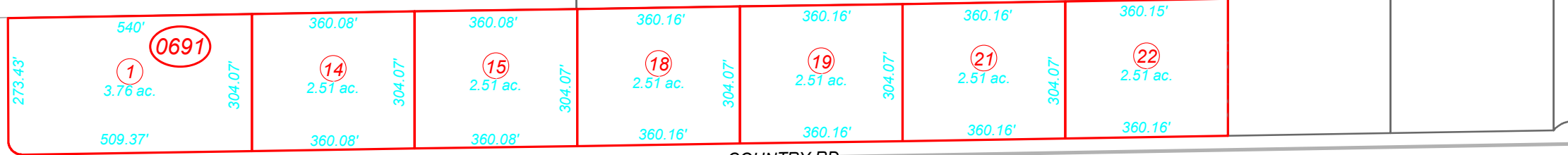
06	05	04	03	02	01
07	08	09	10	11	12
18	17	16	15	14	13
19	20	21	22	23	24
30	29	28	27	26	25
31	32	33	34	35	36



36N37E

1
Page 1

66



COUNTRY RD

DESERT-GEM-RD

RIVERVIEW LN

71
Page 2

69
Page 2

71
Page 1