

06	05	04	03	02	01
07	08	09	10	11	12
18	17	16	15	14	13
19	20	21	22	23	24
30	29	28	27	26	25
31	32	33	34	35	36



HUMBOLDT COUNTY

PT. N1/2 SE1/4 SEC. 36 T.36N. R.37E.

NOTE: This plat is for assessment purposes only and does not represent a survey of the lands on this plat.



Map prepared by:
HUMBOLDT COUNTY ASSESSOR'S OFFICE
WINNEMUCCA, NEVADA 89445

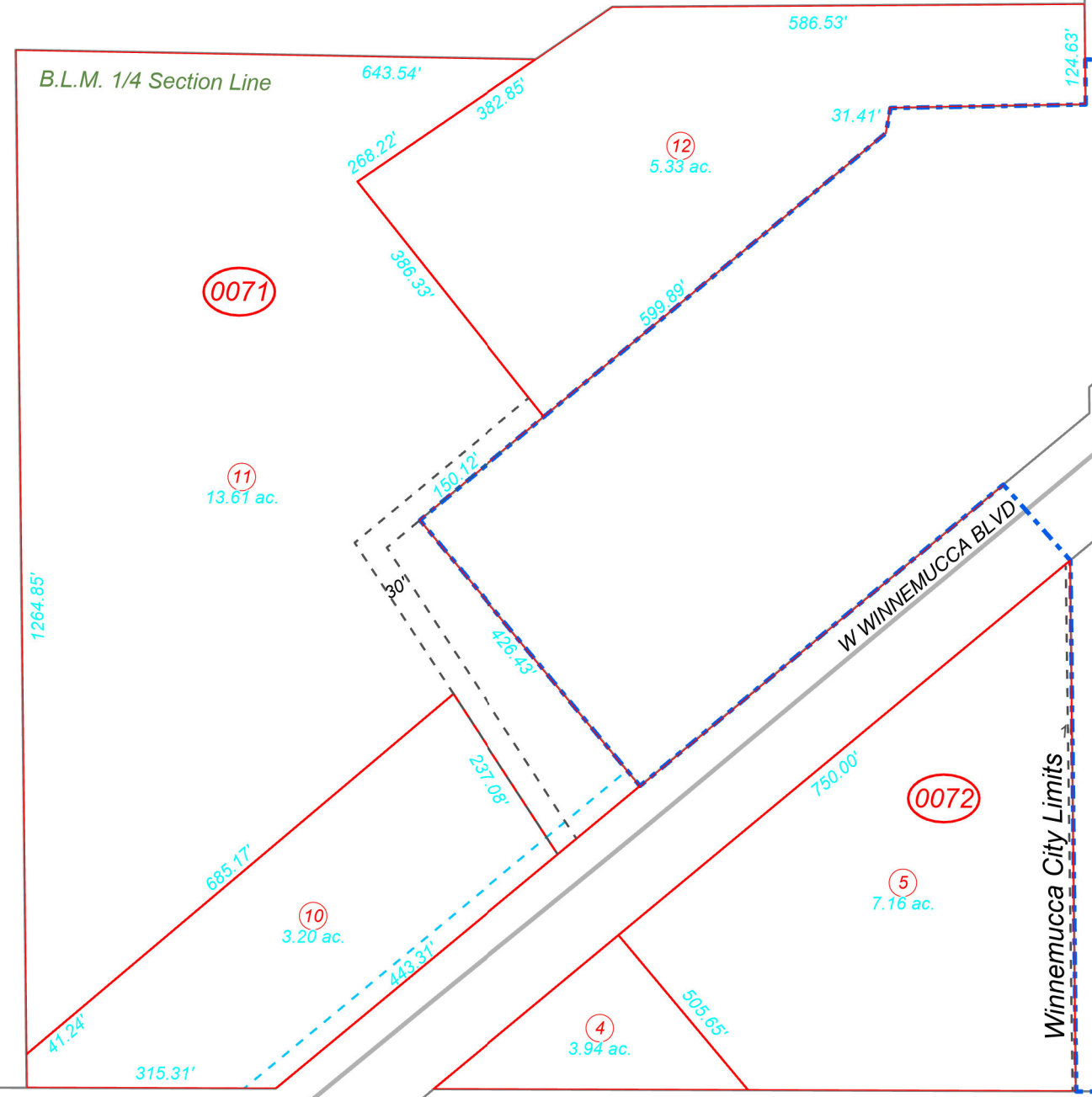
10-7

1"=200'
M.D.B. & M.

36N37E

1
Page 1

1



47

10

8

9

33
Page 2