

06	05	04	03	02	01
07	08	09	10	11	12
18	17	16	15	14	13
19	20	21	22	23	24
30	29	28	27	26	25
31	32	33	34	35	36



HUMBOLDT COUNTY

W1/2 SEC. 8 T.35N. R.40E.

NOTE: This plat is for assessment purposes only and does not represent a survey of the lands on this plat.



Map Prepared by:
HUMBOLDT COUNTY ASSESSOR'S OFFICE
WINNEMUCCA, NEVADA 89445

8-53

1"=600'
M.D.B. & M.

35N40E

58

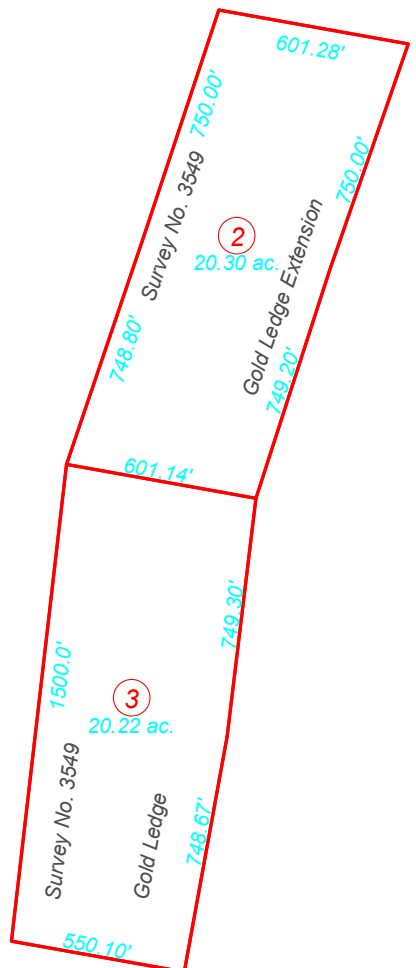
46

1
285.24 ac.

2
20.30 ac.

3
20.22 ac.

0531



PUMPERNICKEL RD