

06	05	04	03	02	01
07	08	09	10	11	12
18	17	16	15	14	13
19	20	21	22	23	24
30	29	28	27	26	25
31	32	33	34	35	36



HUMBOLDT COUNTY

W1/2 NW1/4, W1/2 E1/2 NW1/4 SEC. 31 T.36N. R.40E.

NOTE: This plat is for assessment purposes only and does not represent a survey of the lands on this plat.



Map Prepared by:
HUMBOLDT COUNTY ASSESSOR'S OFFICE
WINNEMUCCA, NEVADA 89445

8-42

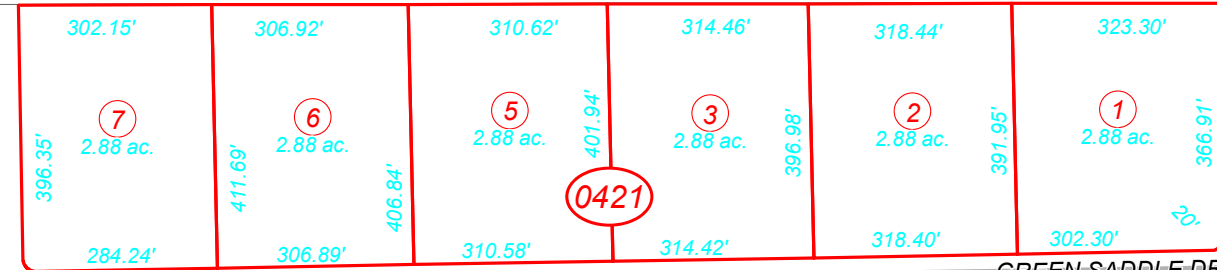
1"=300'
M.D.B. & M.

36N40E

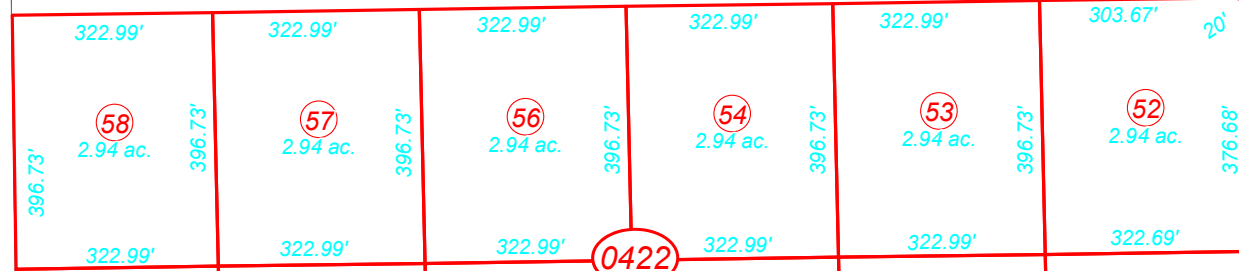
65

MOHICAN DR

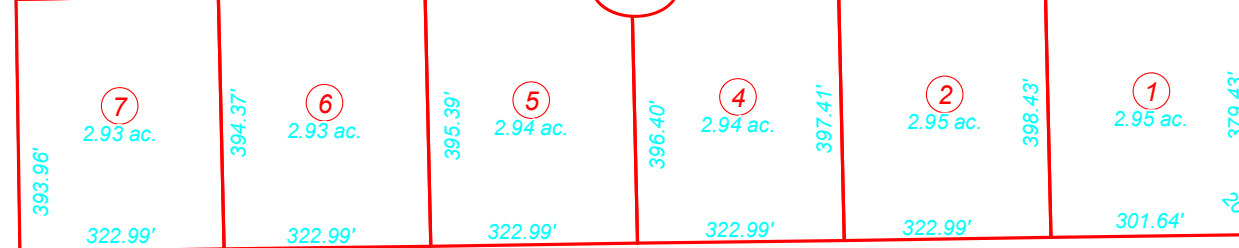
3



GREEN SADDLE DR

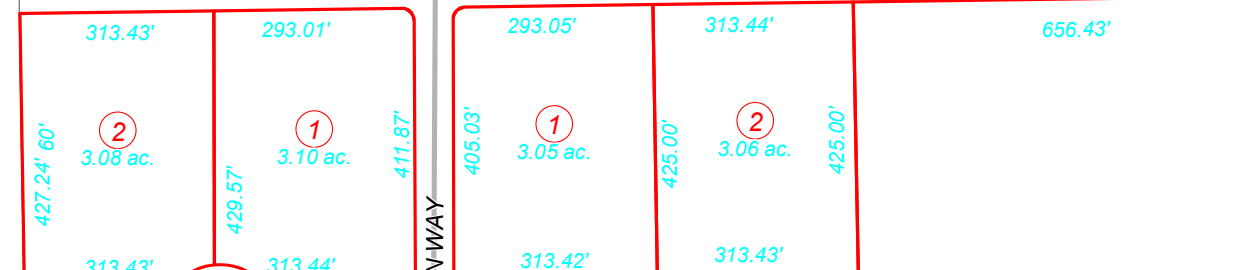


BRETON WAY

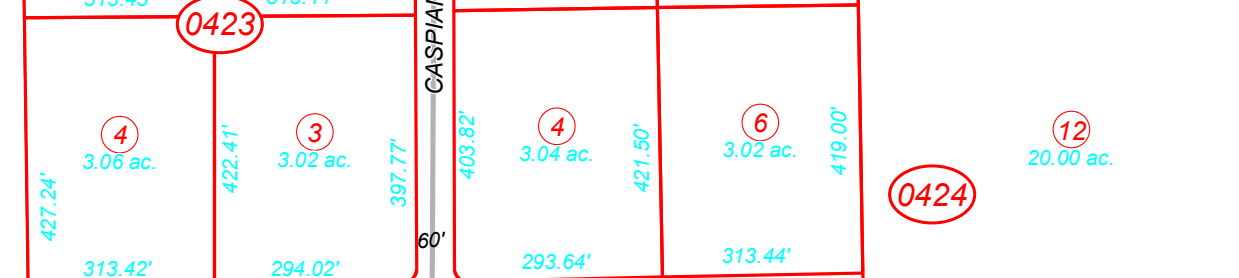


CLYDESDALE DR

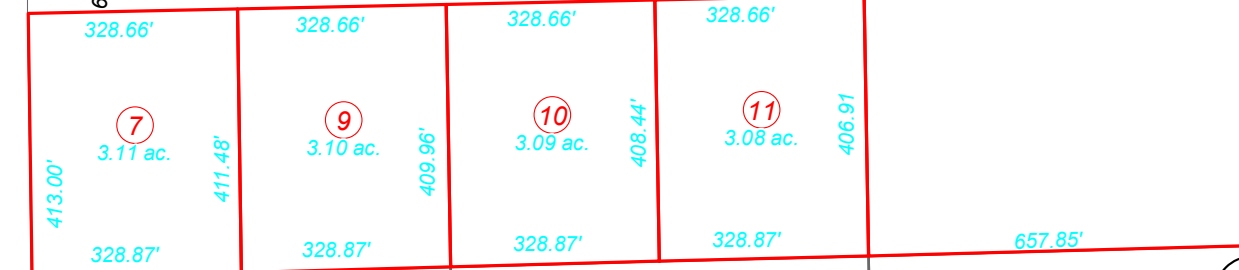
1



CASPIAN WAY



ANDALUSIAN WAY



43

WRANGLER WAY

60
Page 2

60
Page 1