

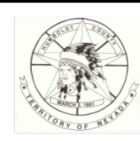
# HUMBOLDT COUNTY

T.34N. R.42E.

7-38

1"=4,000'

M.D.B. & M.



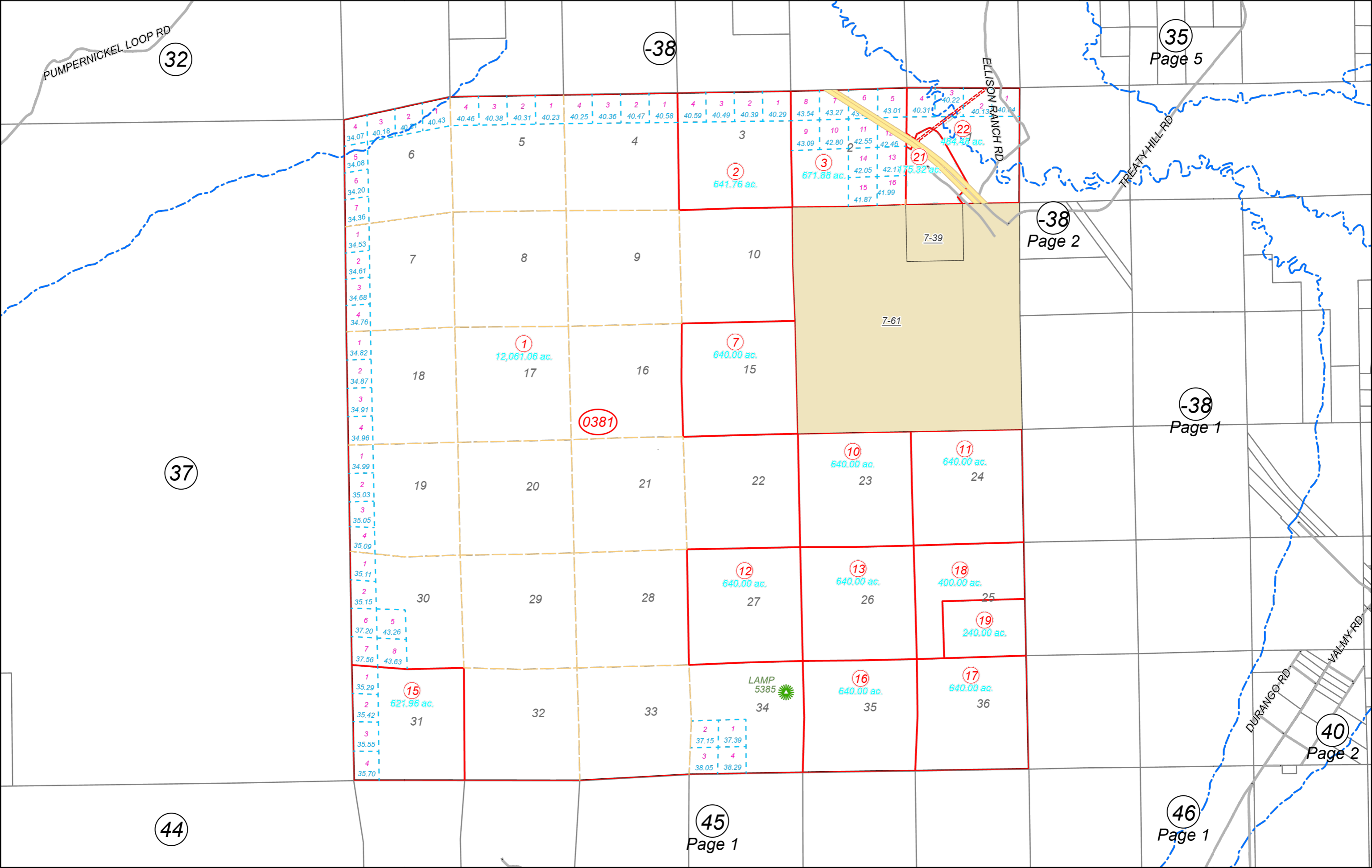
Map prepared by:  
HUMBOLDT COUNTY ASSESSOR'S OFFICE  
WINNEMUCCA, NEVADA 89445

NOTE: This plat is for assessment purposes only and does not represent a survey of the lands on this plat.

06	05	04	03	02	01
07	08	09	10	11	12
18	17	16	15	14	13
19	20	21	22	23	24
30	29	28	27	26	25
31	32	33	34	35	36



34N42E



32

-38

35  
Page 5

-38  
Page 2

-38  
Page 1

37

40  
Page 2

44

45  
Page 1

46  
Page 1