

06	05	04	03	02	01
07	08	09	10	11	12
18	17	16	15	14	13
19	20	21	22	23	24
30	29	28	27	26	25
31	32	33	34	35	36



HUMBOLDT COUNTY
SW1/2 SW1/4 SEC. 31 T.39N. R.42E.

NOTE: This plat is for assessment purposes only
and does not represent a survey of the lands on this plat.

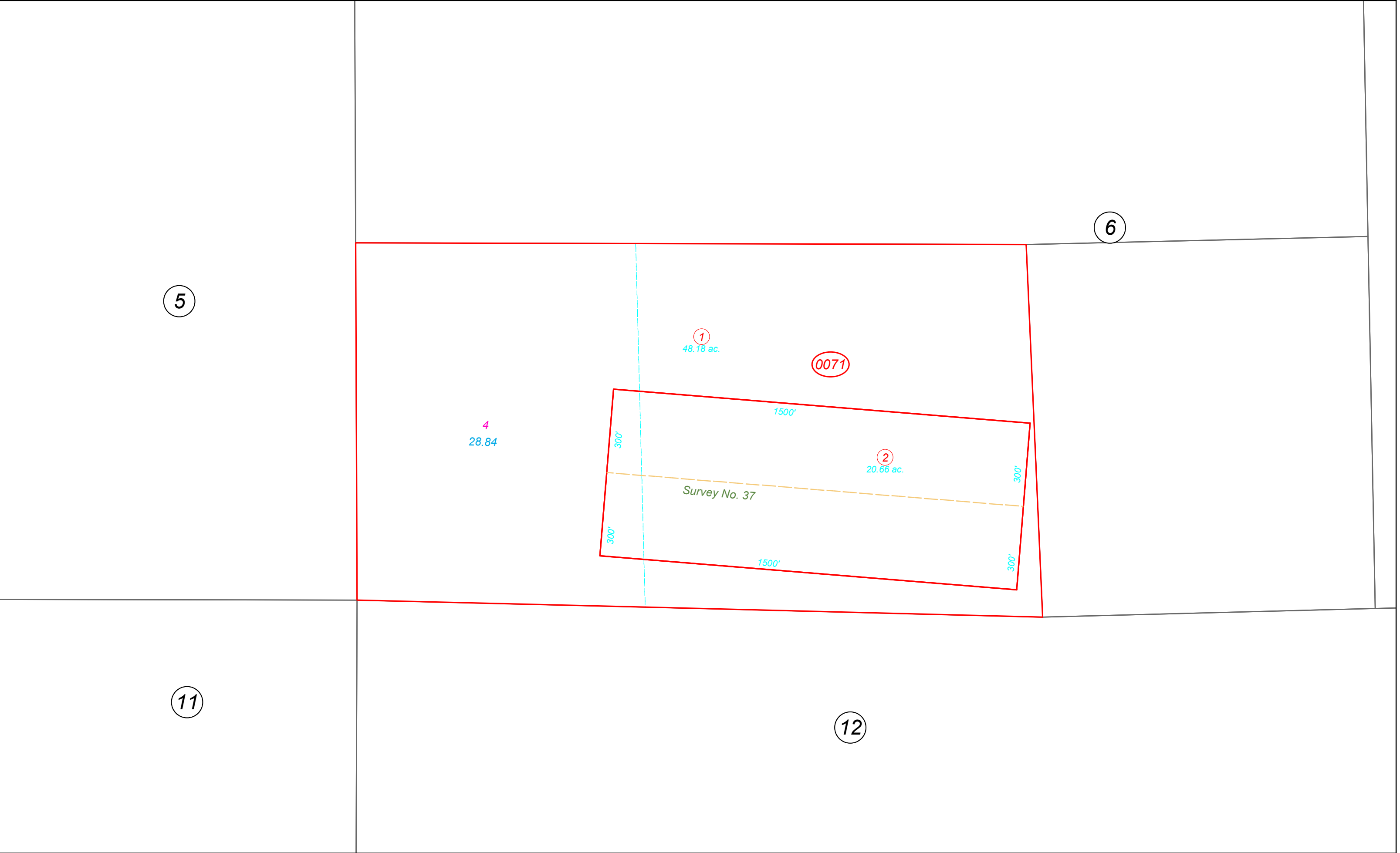


Map Prepared by:
HUMBOLDT COUNTY ASSESSOR'S OFFICE
WINNEMUCCA, NEVADA 89445

7-7

1"=300'
M.D.B. & M.

39N42E



5

6

0071

4
28.84

1
48.18 ac.

2
20.66 ac.

Survey No. 37

11

12