

HUMBOLDT COUNTY  
PT. N1/2 SEC. 21 T.37N. R.38E.

NOTE: This plat is for assessment purposes only  
and does not represent a survey of the lands on this plat.



Map Prepared by:  
HUMBOLDT COUNTY ASSESSOR'S OFFICE  
WINNEMUCCA, NEVADA 89445

6-51

1"=300'  
M.D.B. & M.

06	05	04	03	02	01
07	08	09	10	11	12
18	17	16	15	14	13
19	20	21	22	23	24
30	29	28	27	26	25
31	32	33	34	35	36

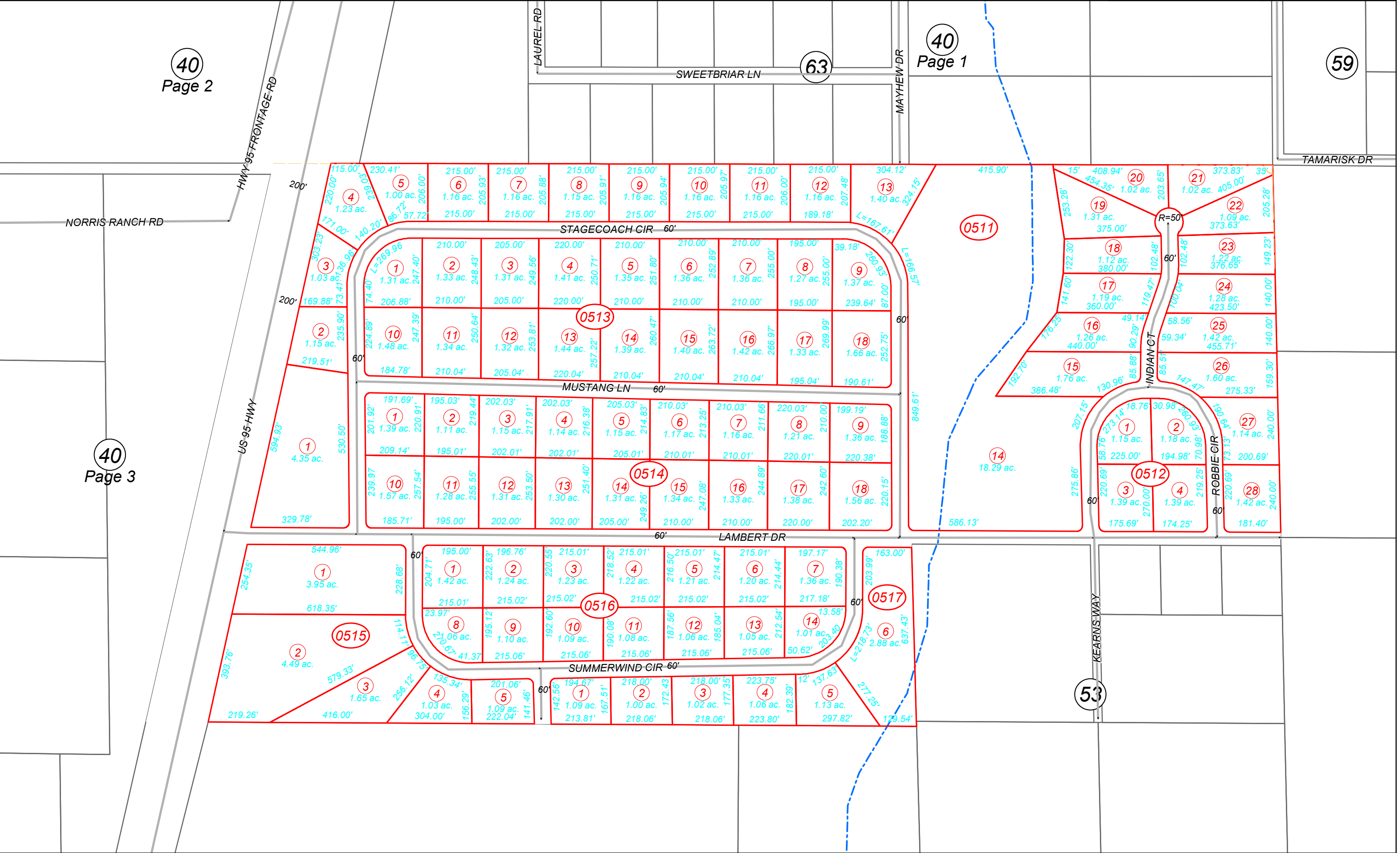
37N38E



40  
Page 2

40  
Page 1

59



40  
Page 3

53