

06	05	04	03	02	01
07	08	09	10	11	12
18	17	16	15	14	13
19	20	21	22	23	24
30	29	28	27	26	25
31	32	33	34	35	36



HUMBOLDT COUNTY

T.37N. R.37E.



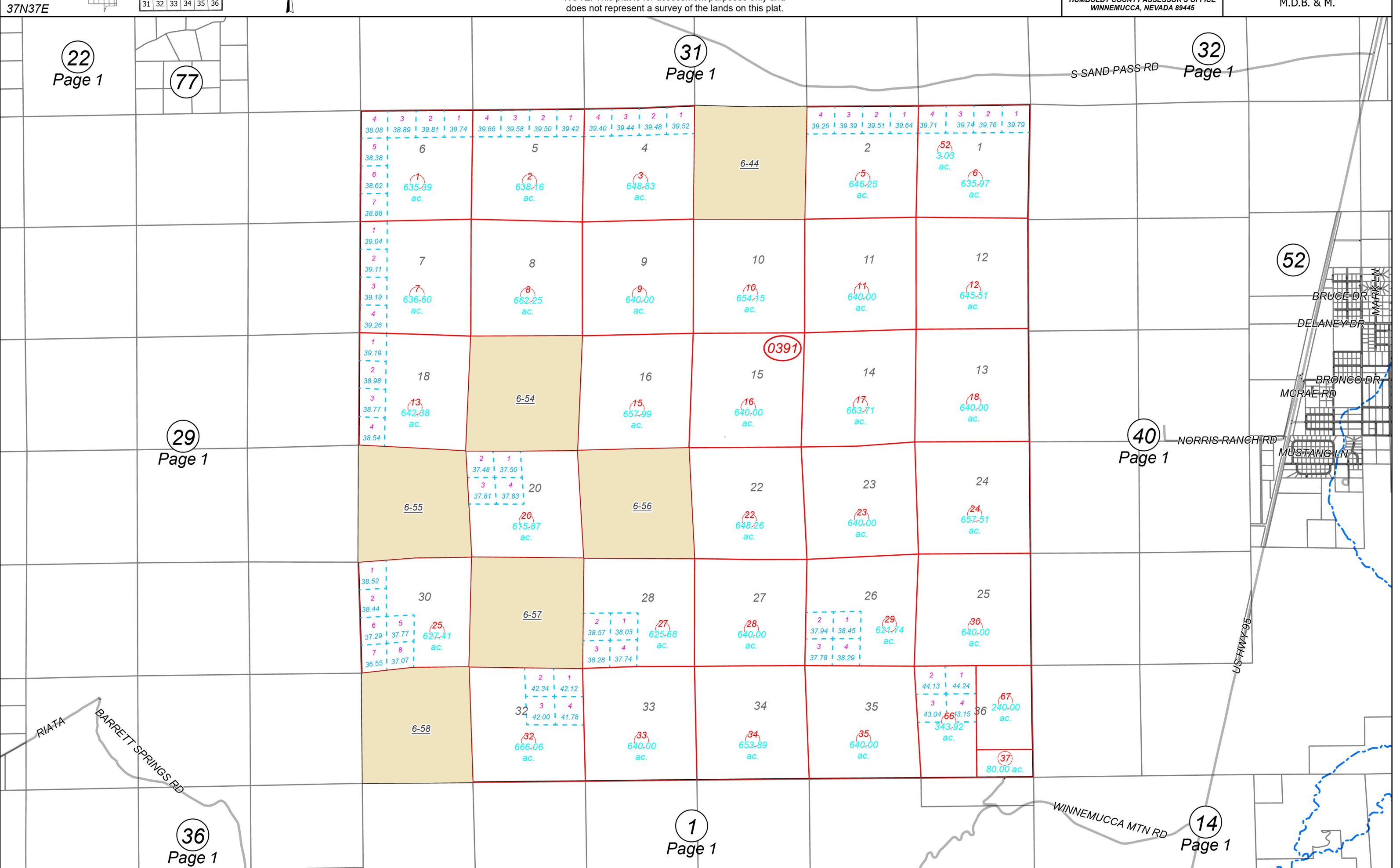
Map prepared by:
HUMBOLDT COUNTY ASSESSOR'S OFFICE
WINNEMUCCA, NEVADA 89445

6-39

1"=4,000'

M.D.B. & M.

NOTE: This plat is for assessment purposes only and does not represent a survey of the lands on this plat.



22
Page 1

77

31
Page 1

32
Page 1

29
Page 1

40
Page 1

36
Page 1

1
Page 1

14
Page 1