

HUMBOLDT COUNTY

SE1/4 SEC. 25 T.35N. R.36E.

Grass Valley Ranchos Sub. No. 2

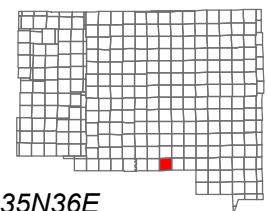
NOTE: This plat is for assessment purposes only and does not represent a survey of the lands on this plat.



Map Prepared by:
HUMBOLDT COUNTY ASSESSOR'S OFFICE
WINNEMUCCA, NEVADA 89445

5-54

1"=300'
M.D.B. & M.



06	05	04	03	02	01
07	08	09	10	11	12
18	17	16	15	14	13
19	20	21	22	23	24
30	29	28	27	26	25
31	32	33	34	35	36



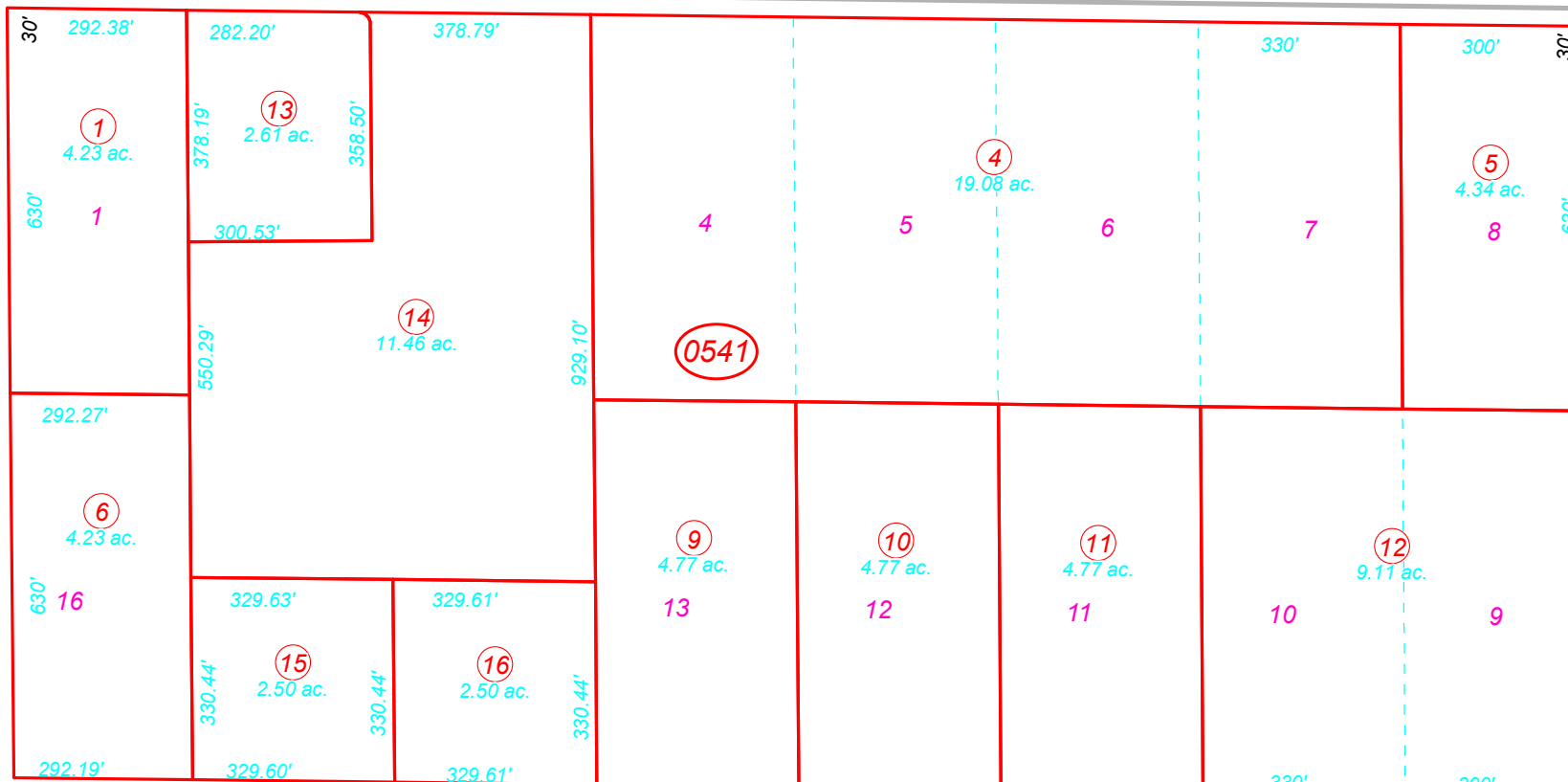
35N36E

51

52

CHIPS RD

ELK ST



0541

0542

53

MOOSE DR

Bk. 14

CERVINE RD

ROMA DR

CORMIER BLVD

