

HUMBOLDT COUNTY

T.35N. R.32E.

NOTE: This plat is for assessment purposes only and does not represent a survey of the lands on this plat.



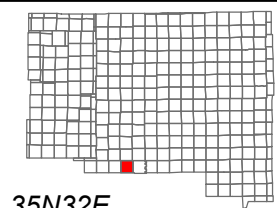
Map Prepared by:
HUMBOLDT COUNTY ASSESSOR'S OFFICE
WINNEMUCCA, NEVADA 89445

5-40

Page 1 of 3

1"=4,000'

M.D.B. & M.



06	05	04	03	02	01
07	08	09	10	11	12
18	17	16	15	14	13
19	20	21	22	23	24
30	29	28	27	26	25
31	32	33	34	35	36

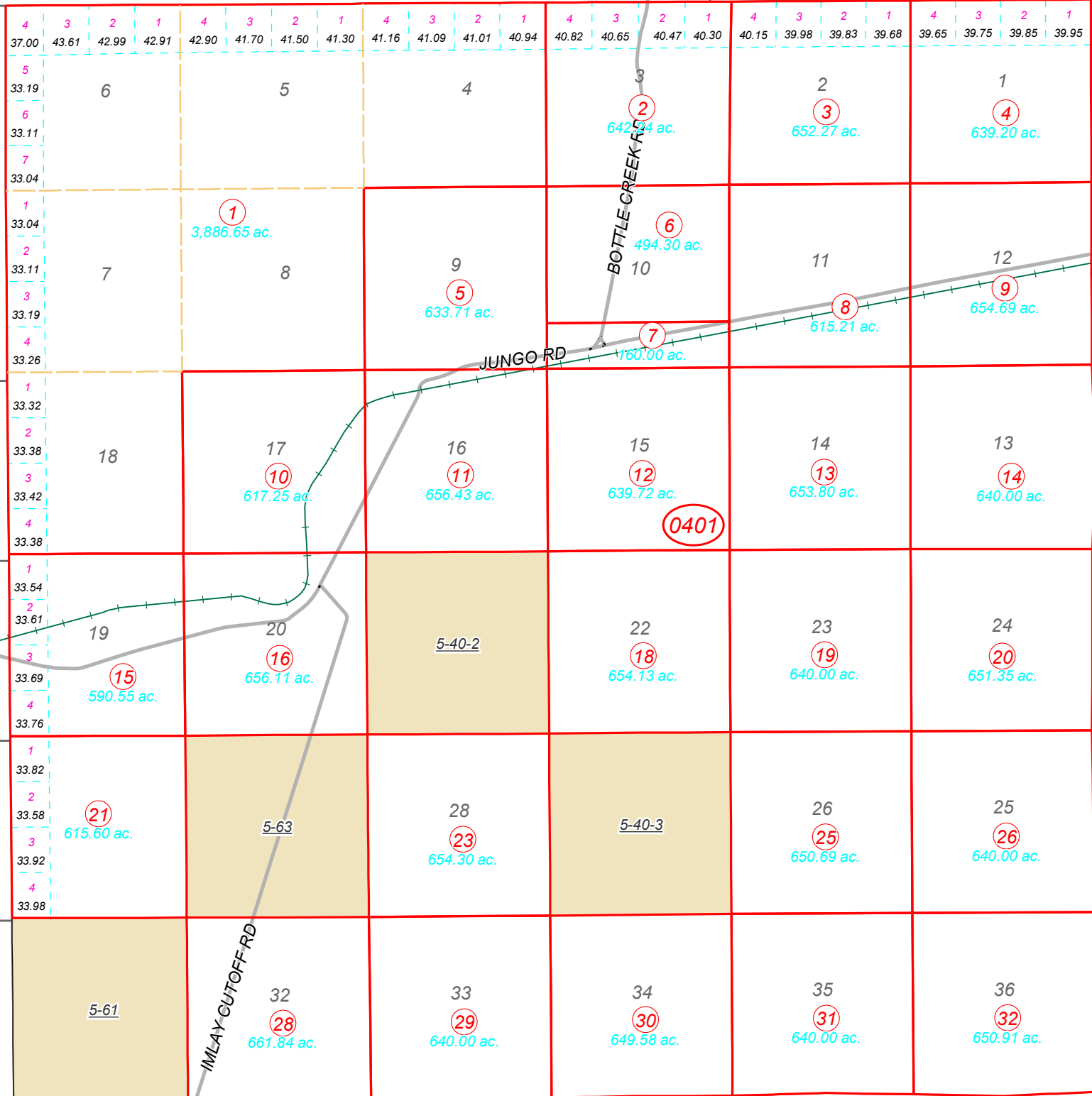


35N32E

31

32

33



41

Page 2

39

65

41

Page 1

71

Page 2

71

Page 3

PERSHING COUNTY

PERSHING CO