

# HUMBOLDT COUNTY

T.38N. R.33E.

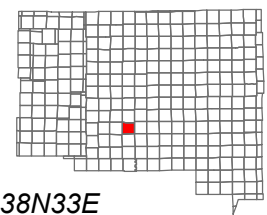
NOTE: This plat is for assessment purposes only  
and does not represent a survey of the lands on this plat.



Map Prepared by:  
HUMBOLDT COUNTY ASSESSOR'S OFFICE  
WINNEMUCCA, NEVADA 89445

## 5-19

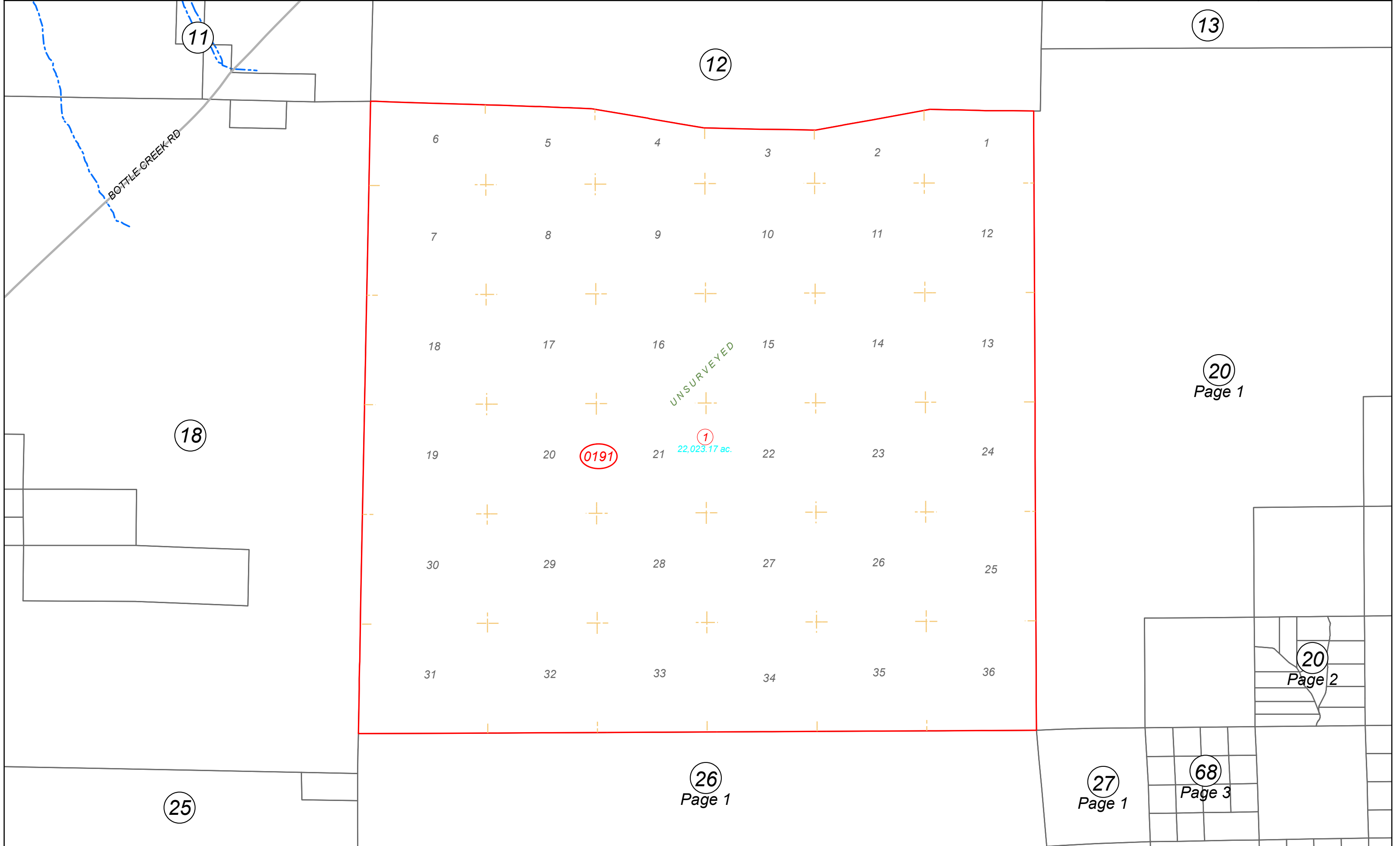
1"=4,000'  
M.D.B. & M.



06	05	04	03	02	01
07	08	09	10	11	12
18	17	16	15	14	13
19	20	21	22	23	24
30	29	28	27	26	25
31	32	33	34	35	36



38N33E



UNSURVEYED

① 22,023.17 ac.

0191

18

25

26  
Page 1

27  
Page 1

68  
Page 3

20  
Page 1

20  
Page 2