

HUMBOLDT COUNTY

T.42N. R.42E.

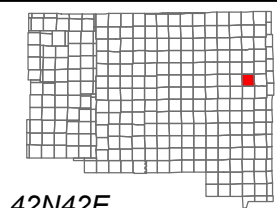
NOTE: This plat is for assessment purposes only and does not represent a survey of the lands on this plat.



Map Prepared by:
HUMBOLDT COUNTY ASSESSOR'S OFFICE
WINNEMUCCA, NEVADA 89445

4-44

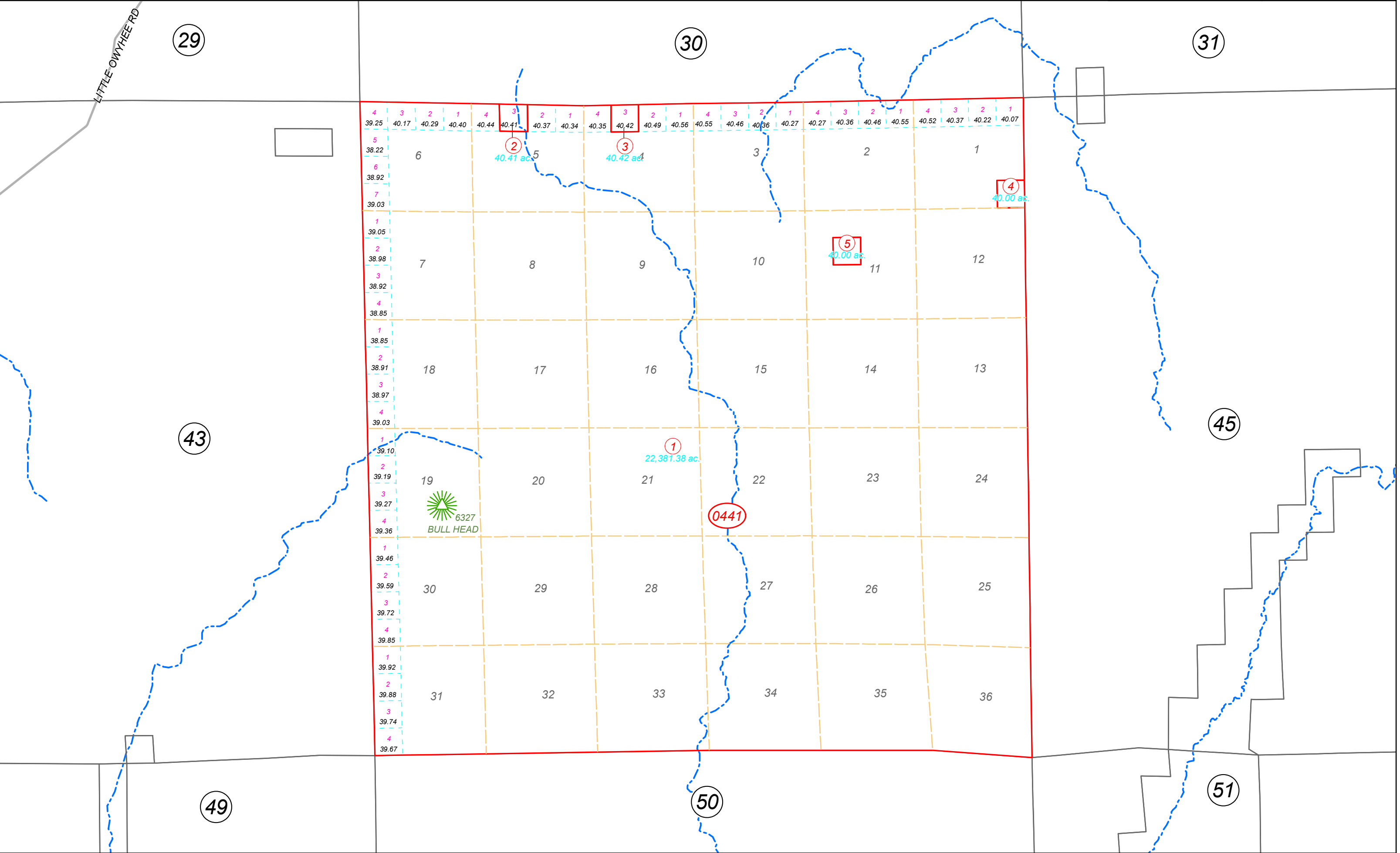
1"=4,000'
M.D.B. & M.



06	05	04	03	02	01
07	08	09	10	11	12
18	17	16	15	14	13
19	20	21	22	23	24
30	29	28	27	26	25
31	32	33	34	35	36



42N42E



29

30

31

43

45

49

50

51

6327
BULL HEAD

0441

4	3	2	1	4	3	2	1	4	3	2	1	4	3	2	1	4	3	2	1					
39.25	40.17	40.29	40.40	40.44	40.41	40.37	40.34	40.35	40.42	40.49	40.56	40.55	40.46	40.56	40.27	40.27	40.36	40.46	40.55	40.52	40.37	40.22	40.07	
5	6	5	4	3	2	1	3	2	1	3	2	1	3	2	1	3	2	1	3	2	1	3	2	1
38.22				40.41 ac	40.42 ac									40.00 ac								40.00 ac		
6	7	8	9	10	11	12																		
38.92																								
7																								
39.03																								
1	2	3	4	5	6	7	8	9	10	11	12													
39.05																								
2	3	4	5	6	7	8	9	10	11	12														
38.98																								
3	4	5	6	7	8	9	10	11	12															
38.92																								
4	5	6	7	8	9	10	11	12																
38.85																								
1	2	3	4	5	6	7	8	9	10	11	12													
38.85																								
2	3	4	5	6	7	8	9	10	11	12														
38.91																								
3	4	5	6	7	8	9	10	11	12															
38.97																								
4	5	6	7	8	9	10	11	12																
39.03																								
1	2	3	4	5	6	7	8	9	10	11	12													
39.10																								
2	3	4	5	6	7	8	9	10	11	12														
39.19																								
3	4	5	6	7	8	9	10	11	12															
39.27																								
4	5	6	7	8	9	10	11	12																
39.36																								
1	2	3	4	5	6	7	8	9	10	11	12													
39.46																								
2	3	4	5	6	7	8	9	10	11	12														
39.59																								
3	4	5	6	7	8	9	10	11	12															
39.72																								
4	5	6	7	8	9	10	11	12																
39.85																								
1	2	3	4	5	6	7	8	9	10	11	12													
39.92																								
2	3	4	5	6	7	8	9	10	11	12														
39.88																								
3	4	5	6	7	8	9	10	11	12															
39.74																								
4	5	6	7	8	9	10	11	12																
39.67																								

22,381.38 ac

40.41 ac

40.42 ac

40.00 ac

40.00 ac