

31 32 33 34 35 36



HUMBOLDT COUNTY

PT. LOTS 1,2 SEC. 32 T.48N. R.38E.

McDermitt

NOTE: This plat is for assessment purposes only and does not represent a survey of the lands on this plat.

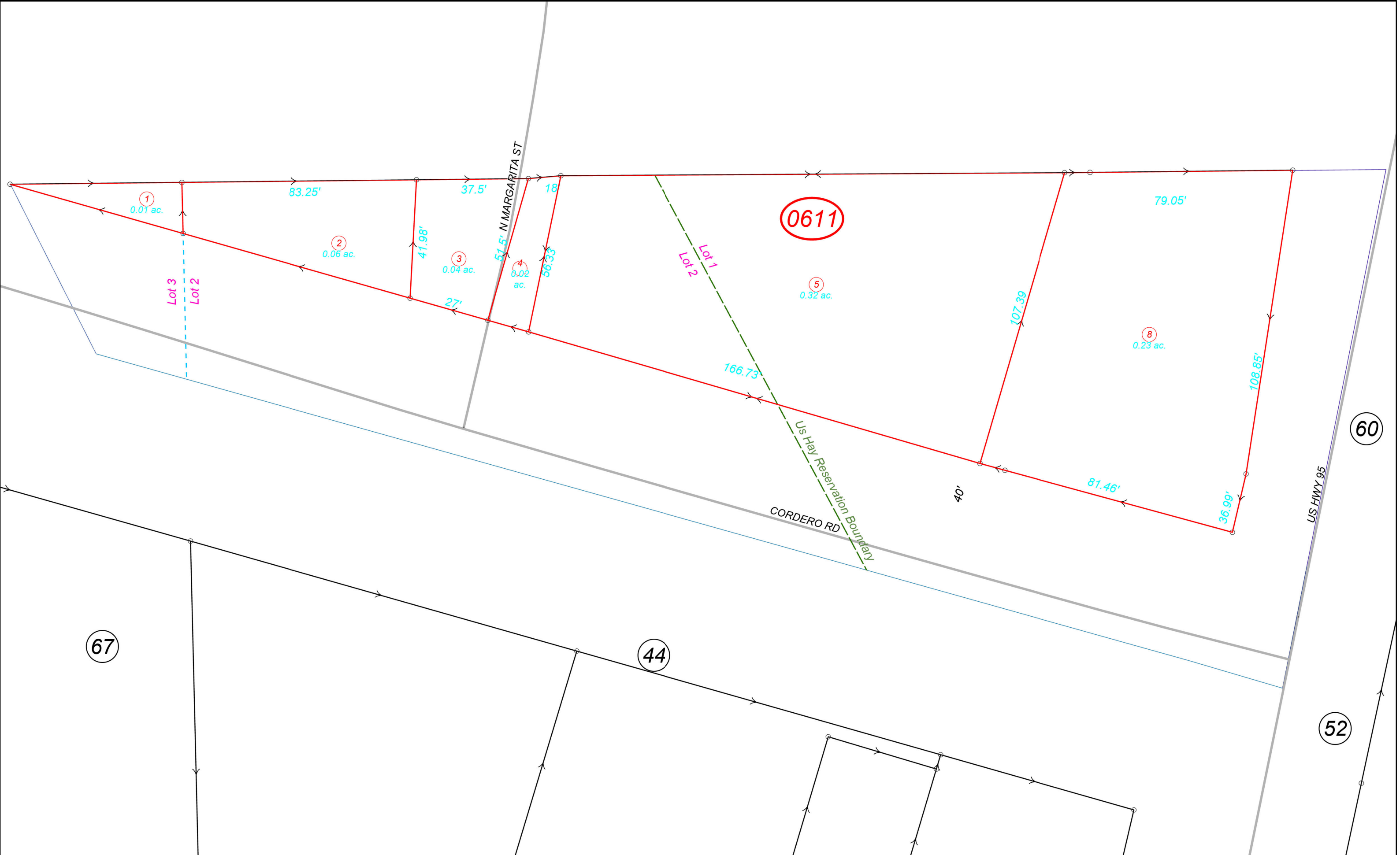


Map prepared by:
HUMBOLDT COUNTY ASSESSOR'S OFFICE
WINNEMUCCA, NEVADA 89445

3-61

1"=30'

M.D.B. & M.



48N38E

67

44

60

52