

06	05	04	03	02	01
07	08	09	10	11	12
18	17	16	15	14	13
19	20	21	22	23	24
30	29	28	27	26	25
31	32	33	34	35	36



HUMBOLDT COUNTY

NW1/4 SEC. 35 T.43N. R.37E.

NOTE: This plat is for assessment purposes only and does not represent a survey of the lands on this plat.



Map prepared by:
HUMBOLDT COUNTY ASSESSOR'S OFFICE
WINNEMUCCA, NEVADA 89445

3-42

1"=300'
M.D.B. & M.

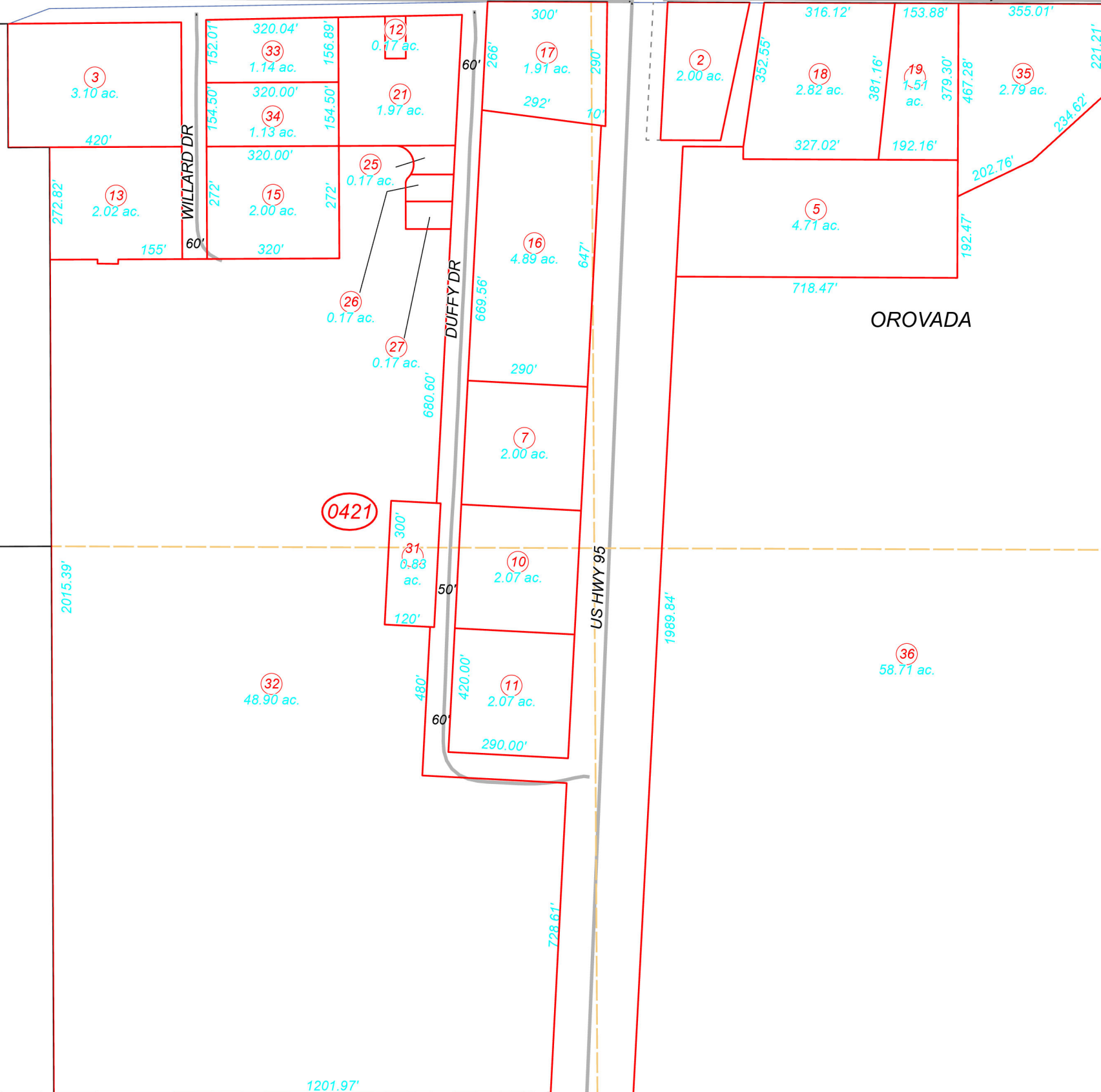
43N37E

41

STATE ROUTE 293

DORIAN DR

ROCK CREEK RD



40

Page 2

40

Page 1

40

Page 3

43