

06	05	04	03	02	01
07	08	09	10	11	12
18	17	16	15	14	13
19	20	21	22	23	24
30	29	28	27	26	25
31	32	33	34	35	36



### HUMBOLDT COUNTY

SW1/4 SW1/4 SEC. 7, W1/2 SW1/4 SEC.17, NE1/4 E1/2 SE1/4 SEC.18 T.42N. R.28E.

NOTE: This plat is for assessment purposes only and does not represent a survey of the lands on this plat.



Map Prepared by:  
HUMBOLDT COUNTY ASSESSOR'S OFFICE  
WINNEMUCCA, NEVADA 89445

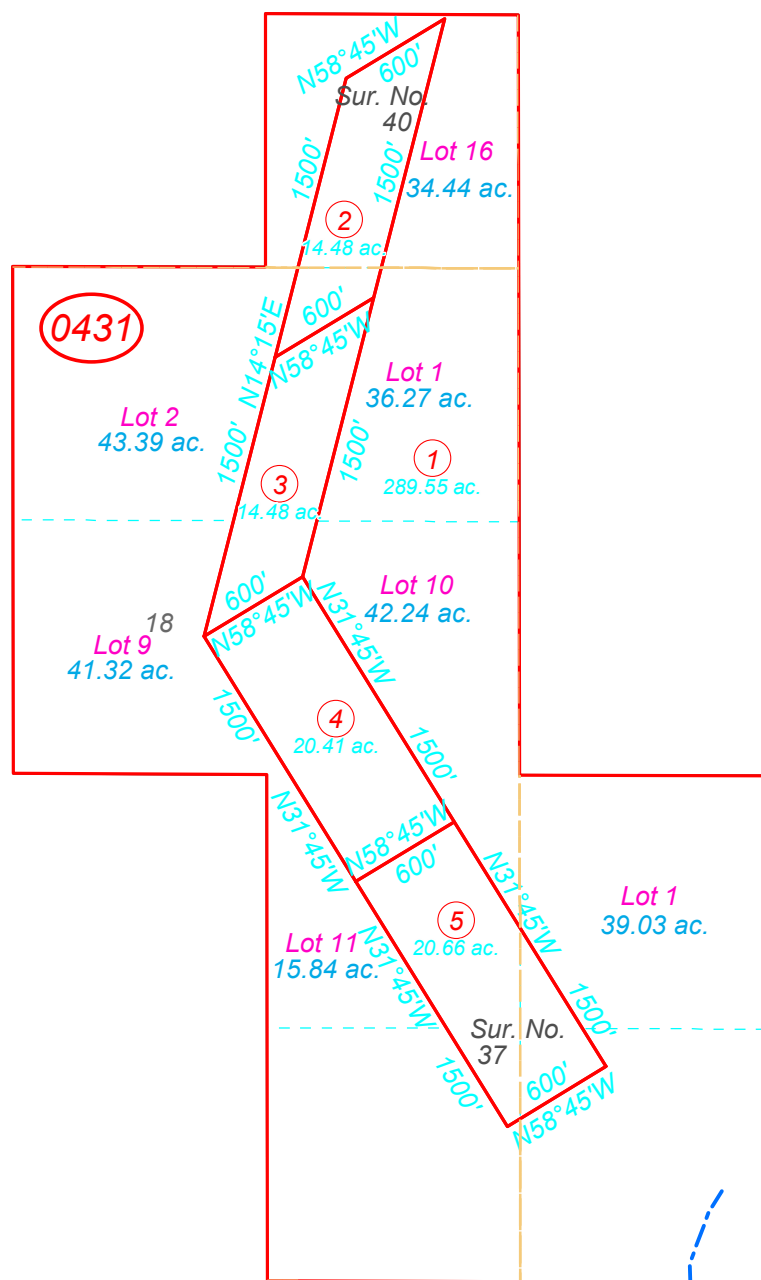
2-43

1"=1,000'  
M.D.B. & M.

42N28E

41

PEARL CAMP RD



42